

Antiek





Antiek is inspired by rustic charm with an industrial chic edge of sophistication and a natural camouflage. Its sophisticated realism lends itself well to many different applications, with Embossed-in-Register finishing and accentuated graining. The natural character of the slightly rustic visuals and wide planks perform flawlessly in high-traffic areas, while maintaining its beauty and style.





Denim Collection

Zip It | 937 Hipster; Jean | 937 Hipster

With a multitude of design options, the Denim Collection functions precisely as the architect or designer intends. It can be dressed up with formal accents or dressed down to create a relaxed environment. The two tile sizes and variety of styles can be mixed and matched effortlessly for dynamic visual effects.



Hem | 12"x36"
and 24"x24"



Inseam | 12"x36"



Jean | 24"x24"



Selvedge | 24"x24"



Zip It | 12"x36"

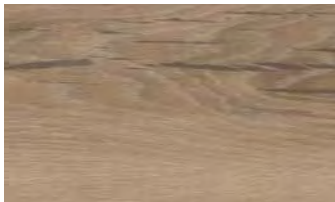
- 5 styles available in 10 colors
- Duracolor® Premium Nylon
- Backed with EcoFlex NXT
- Use of FlexLok™ Tabs optional for adhesive free installation
- Declared Red List Free
- Hem, Zip It and Inseam available as 12"x36" planks
- Selvedge, Jean and Hem available as 24"x24" tiles

Antiek Performance

- Oversized 9"x 48" and 8"x 60" enhanced resilient tile planks install over large areas quickly
- 2.5mm overall thickness and 20 mil commercial wear layer for superior durability
- Precisely aligned Embossed-in-Register brings a realistic visual texture
- M-Force™ Enhanced Urethane finish for stain and wear resistance
- Install over slabs up to 95% RH using Mohawk M95.0 and MS160 adhesives
- Contains a minimum of 8% bio-based renewable resource content by total product weight
- Avoids harmful phthalates without sacrificing performance by substituting a bio-based, rapidly renewable plasticizer



Colorways



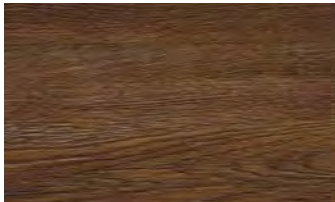
131 Bisque – 9" x 48"



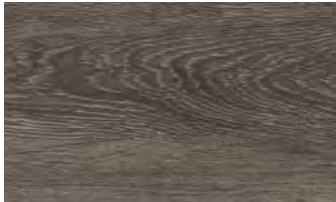
152 French Oak – 9" x 48"



311 Alabaster – 9" x 48"



353 Burl – 9" x 48"



931 Nimbus – 9" x 48"



989 Cassolette – 9" x 48"



831 Biscotti – 8" x 60"



852 Cinnamon – 8" x 60"



926 Smoke – 8" x 60"



988 Charcoal – 8" x 60"

Specifications

Style Name	Antiek
Style Number	C0015
Brand	Mohawk Group – Hard Surface
Product Type	Enhanced Resilient Tile



DESIGN

Overall Gauge	0.10" (2.5mm)
Wear Layer	20 mil (0.5mm)
Finish	M-Force™ Enhanced Urethane
Texture	Wood Emboss / Embossed in Register
Edge Profile	Microbevel
Colors/Sizes Available	4 Colors - 8"W x 60"L 6 Colors - 9"W x 48"L
Packaging	
8"x60"	40 sf/ctn; 12 pcs/ctn; 35.25lbs/ctn
9"x48"	36 sf/ctn; 12 pcs/ctn; 33 lbs/ctn
Installation	Glue Down
Required Adhesive	MS160 Spray Adhesive, M95.0 Resilient Flooring Adhesive, M700 Pressure Sensitive Adhesive
Optional Underlayment	Mohawk AccuSound™



PERFORMANCE

Construction	Commercial Grade Enhanced Resilient Tile
Classification	ASTM F1700 - Class III, Type A - Smooth, Type B - Embossed
Squareness	ASTM F2055 - Passes - 0.10" max
Size and Tolerance	ASTM F2055 - Passes - ± 0.016 "/linear foot
Thickness	ASTM F386 - Passes - Nominal ± 0.005 "
Flexibility	A ASTM F137 - Passes - 1" mandrel
Dimensional Stability	ASTM F2199 - Passes - ≤ 0.024 "/linear foot
Static Load Limit	ASTM F970 - Passes, modified at 1500 psi
Residual Indentation	ASTM F1914 - Passes - Average less than 8%
Slip Resistance	ASTM D2047 - Passes - > 0.6 Wet, 0.6 Dry
Resistance to Chemicals	ASTM F925 - Passes - No change or Slight Change
Resistance to Light	ASTM F1515 - Passes - $\Delta E \leq 8$
Resistance to Heat	ASTM F1514 - Passes - $\Delta E \leq 8$
Critical Radiant Flux	ASTM E648 - Passes - ≥ 0.45 watts/cm ² , Class 1
Smoke Density	ASTM E662 Passes



SUSTAINABILITY

Certification	FloorScore® Certified
Bio-Based Content	Contains a minimum of 8% bio-based renewable resource content by total product weight
Phthalate-Free Composition	Avoids harmful phthalates without sacrificing performance, quality or ease of maintenance by substituting a bio-based, rapidly renewable plasticizer



SERVICE

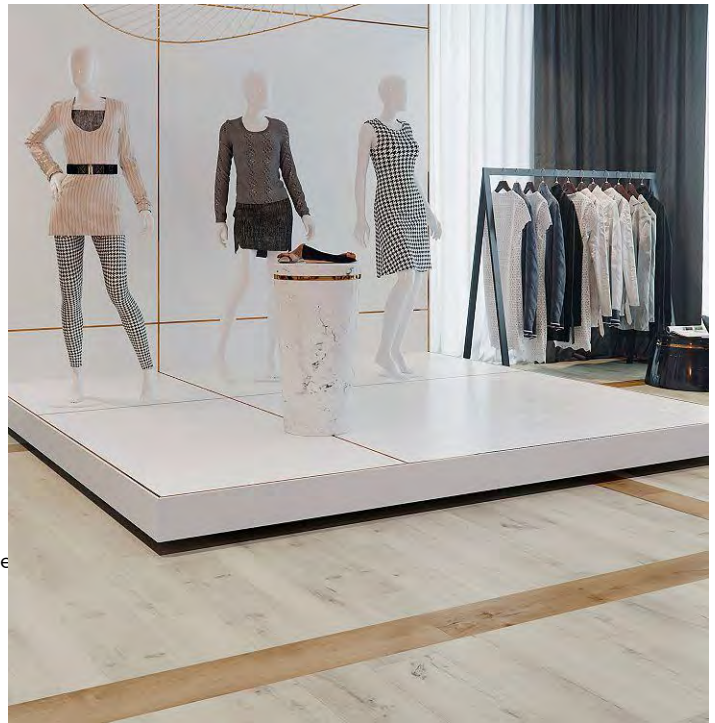
Warranty	Limited 10 Year Commercial Warranty
----------	-------------------------------------

Glue Down

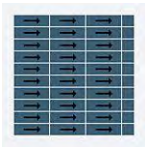
Antiek

Style Name: Antiek
 Style Number: C0015
 Product Type: LVT
 Size: 9" X 48"

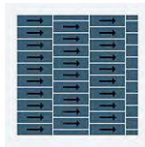
Feature	Description
Overall Thickness	2.5 mm
Wear Layer	20 mil (0.5 mm)
Finish	M-Force
Surface Profile	Embossed In Register
Squareness	ASTM F2055 - Passes - 0.010 in. max
Flexibility	ASTM F137 - Passes - 1" mandrel
Square Foot per Carton	36
Pounds per Carton	32.4
Classification	ASTM F1700 - Class III, Type B - Embossed



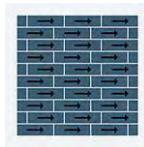
Recommended Installation Methods



Monolithic



Monolithic Stepping



Half Lap



Random



Brick Ashlar



Herringbone

Colorways



Bisque

Color code: 131
Style number: C0015



French Oak

Color code: 152
Style number: C0015



Alabaster

Color code: 311
Style number: C0015



Burl

Color code: 353
Style number: C0015



Biscotti

Color code: 831
Style number: C0015



Cinnamon

Color code: 852
Style number: C0015



Smoke

Color code: 926
Style number: C0015



Nimbus

Color code: 931
Style number: C0015



Charcoal

Color code: 988
Style number: C0015



Cassolette

Color code: 989
Style number: C0015

Performance

Feature	Description
Static Load	ASTM F970 - Passes, modified - 1500 psi
Dimensional Stability	ASTM F2199 - Passes - ≤ 0.024 in. per linear foot
Residual Indentation	ASTM F1914 - Passes - Average less than 8%
Resistance to Chemicals	ASTM F925 - Passes - No Change or Slight Change
Resistance to Heat	ASTM F1514 - Passes - ≤ 8
Resistance to Light	ASTM F1515 - Passes - ≤ 8
Critical Radiant Flux	ASTM E648 - Passes - ≤ 0.45 watts/cm ² , Class 1
Smoke Density	ASTM E662 - Passes

Sustainability

Feature	Description
Floor Score	Floor Score Certified
Country of Origin	China
Mindful Materials	Participates in Mindful Materials Library
Environmental Product Declaration	EPD Vinyl Tile
Beyond Carbon Neutral	This product is 100% carbon neutral plus an additional 5% offset
Carbon Handprint	-0.055 kg CO ₂ e/ft ²
Embodied Carbon	1.11 kg CO ₂ e/ft ²

Warranties

Limited 15 Year M-Force Commercial Warranty

