



**AmericanBiltrite**  
Flooring

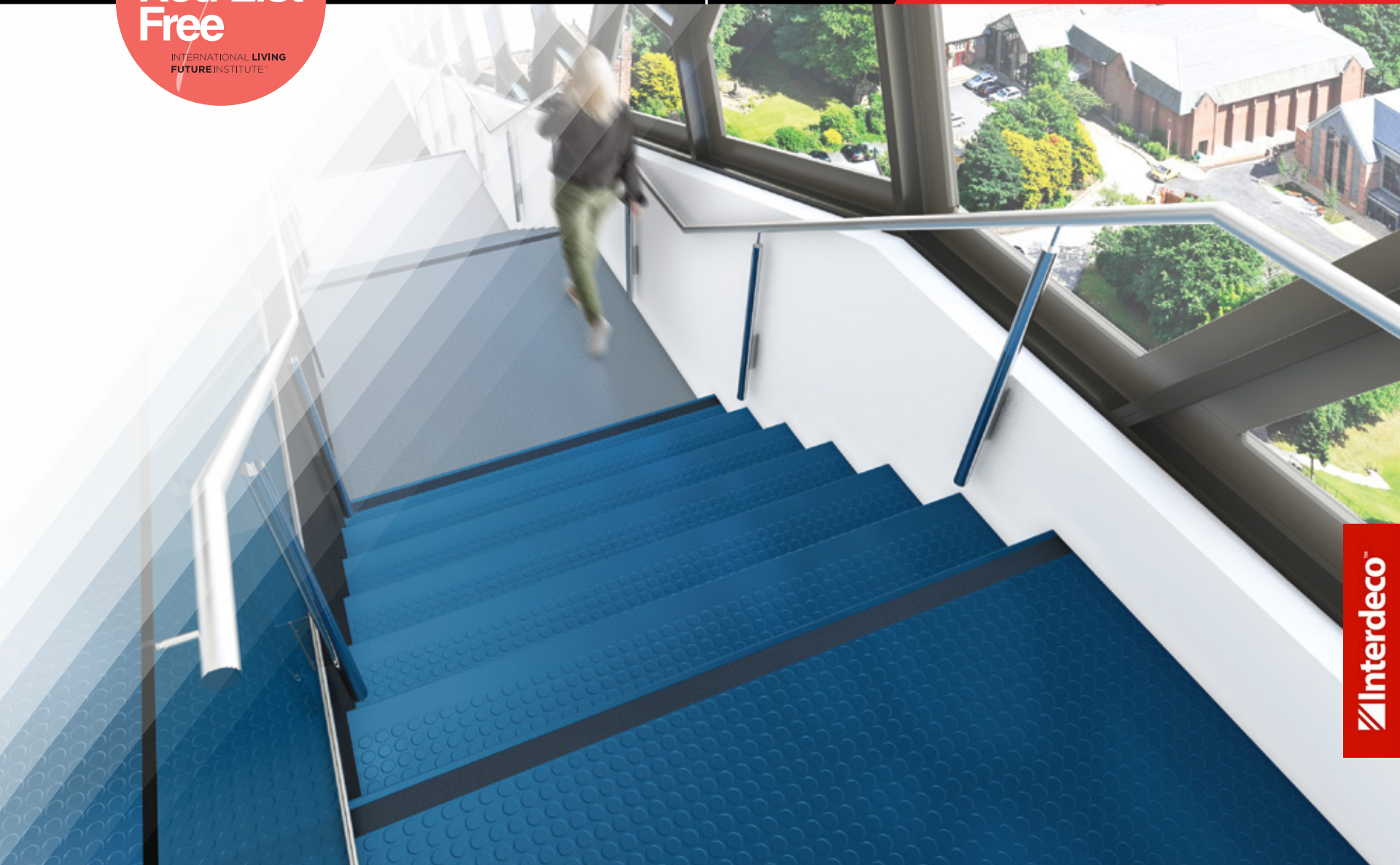
**Declare.**

**Red List  
Free**

INTERNATIONAL LIVING  
FUTURE INSTITUTE

**ABPURE | MARATHON**

**RUBBER STAIR TREADS**



**Interdeco™**



# American Biltrite Stair Treads

Today stair treads are more than just a material used to avoid slippage, they have become an integral part of the overall design statement. Recognizing this need, American Biltrite introduces a complete stair tread system that delivers on the promise of color and design, safety and durability as well as ease of maintenance.

**Red List  
Free**

INTERNATIONAL LIVING  
FUTURE INSTITUTE

ABPURE® and Marathon® rubber flooring products are **Red List Free** and part of the Living Building Challenge **Declare** Program.

#### What is Declare?

The program provides a clear and informative label for building products and supports the Living Building Challenge's Red List for material transparency and toxic chemical avoidance as well as simplifying material specification and project certification.

#### What is the Red List and what does it mean to be Red List Free?

The Red List represents the “worst in class” materials, chemicals, and

elements known to pose serious risks to human health and the greater ecosystem. For a product to be awarded Red List Free status means that it does not contain any ingredients on the Living Building Challenge Red List.

To learn more about the Living Building Challenge, visit [www.living-future.org/lbc](http://www.living-future.org/lbc).

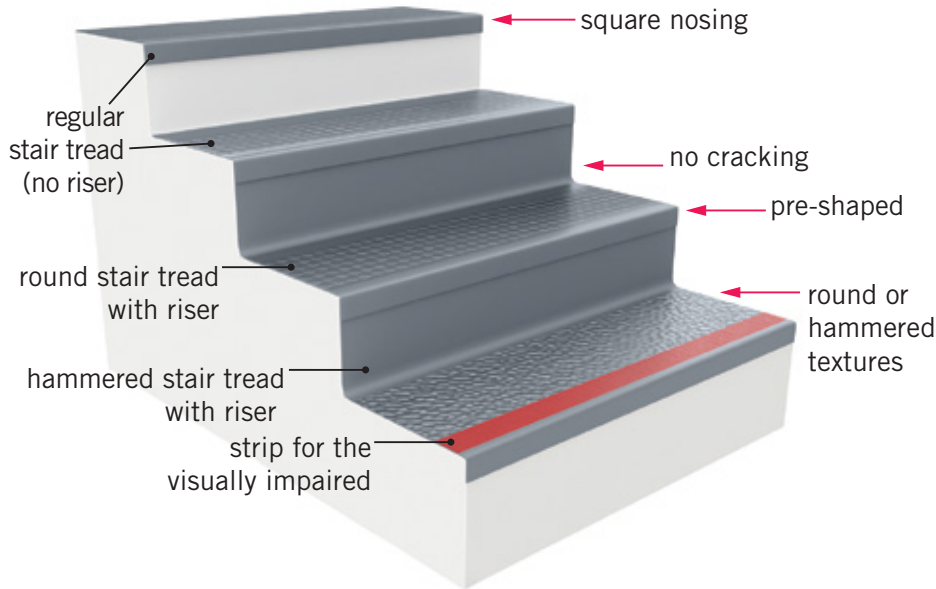
**Declare.**

**Interdeco**

# A Complete System

## Stair Tread System

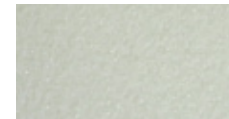
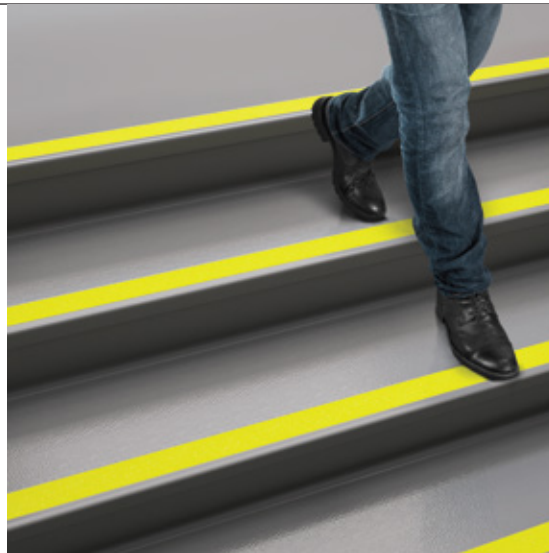
Featuring tread, nose and riser in **a single piece.**



- Offering a comprehensive selection of stair treads in both regular stair treads and stair treads with riser combinations.
- Available in two designs: Round and Hammered. Both are available in ABPURE with colorfast technology and MARATHON compounds.
- The system is complemented with the addition of Landing Tiles that match the stair treads in Round and Hammered designs.
- The entire program is **Declare “Red List Free”**.

## Carborundum Strips

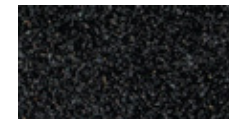
These strips can be added to your stair treads for added traction and as visual aids.



VIT-82  
Nightglow



VIT-72  
Yellow



VIT-22  
Black



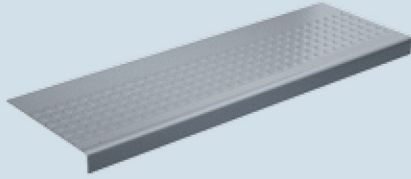
VIT-52  
Red



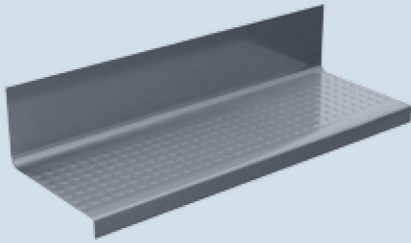
VIT-15  
White

## Round Stair Treads

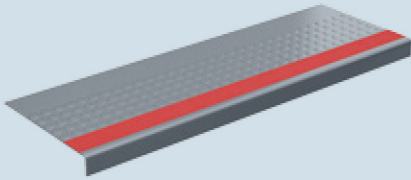
Regular Stair Treads  
(RTP) (RTR)



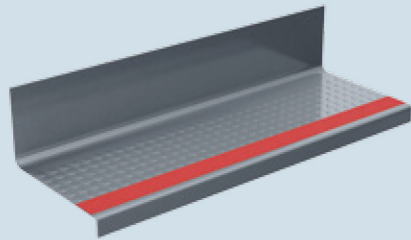
Stair Treads with Riser  
(OPP) (OPR)



Stair Treads for the Visually Impaired  
(RVP) (RVR)

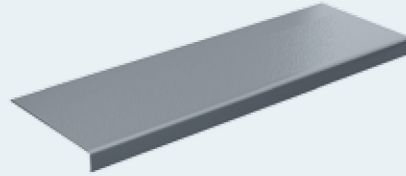


Stair Treads with Riser for the Visually Impaired  
(OVP) (OVR)

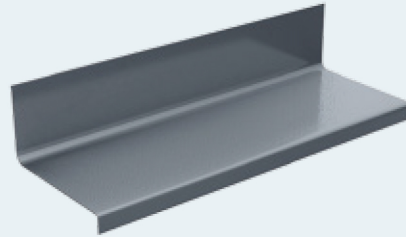


## Hammered Stair Treads

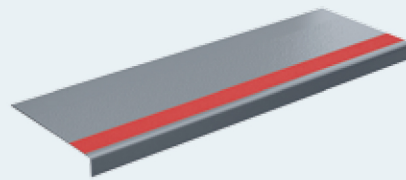
Regular Stair Treads  
(RTM) (RTH)



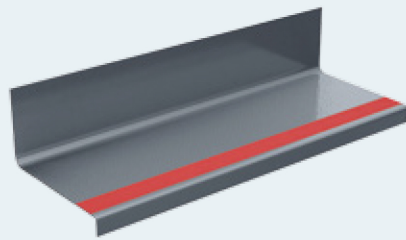
Stair Treads with Riser  
(OPM) (OPH)



Stair Treads for the Visually Impaired  
(RVM) (RVH)



Stair Treads with Riser for the Visually Impaired  
(OVM) (OVH)

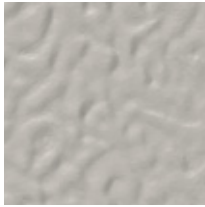


# ABPURE®

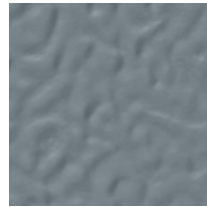
COLORS SHOWN IN ABPURE HAMMERED PROFILE  
ALL STAIR TREADS AVAILABLE IN HAMMERED AND ROUND PROFILES



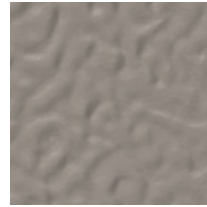
**RTM-15**  
Snowstorm



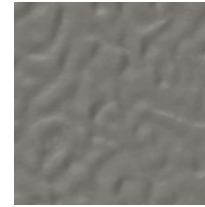
**RTM-35**  
Ash Gray



**RTM-38**  
Steel



**RTM-32**  
Appalachian Trail



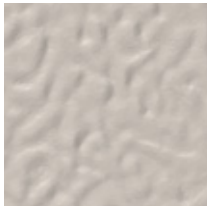
**RTM-37**  
Battleship Gray



**RTM-23**  
Anthracite



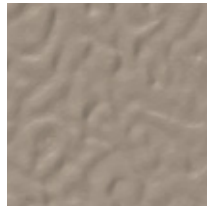
**RTM-20**  
Starry Night



**RTM-30**  
Sand Castle



**RTM-45**  
Wheat



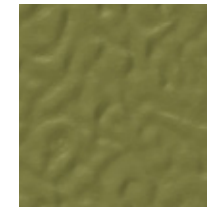
**RTM-36**  
Tan



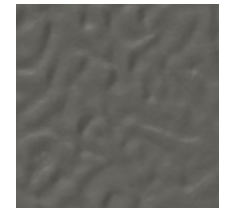
**RTM-83**  
Pistachio



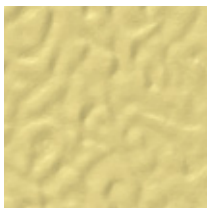
**RTM-85**  
Olive Green



**RTM-87**  
Tundra



**RTM-39**  
Camouflage Green



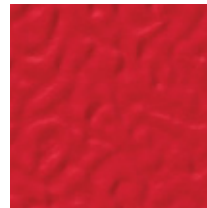
**RTM-72**  
Limoncello



**RTM-75**  
Orangerine



**RTM-52**  
Terracotta



**RTM-55**  
Fire Engine Red



**RTM-57**  
Chestnut



**RTM-58**  
Espresso



**RTM-56**  
Shiraz



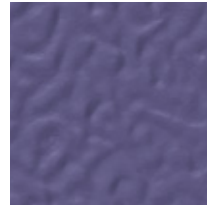
**RTM-92**  
Aquamarine



**RTM-98**  
Blue Lagoon



**RTM-95**  
Electric Blue



**RTM-68**  
Rich Lavender



**RTM-66**  
Doll House



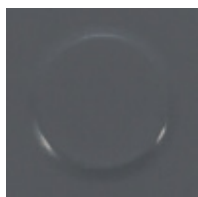
Width: 36" (0.914 m) 48" (1.219 m) 72" (1.828 m) Gauge: 0.125" (3.17 mm) Gauge: 0.140" (3.5 mm)

# MARATHON®

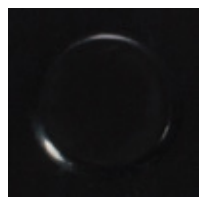
COLORS SHOWN IN MARATHON ROUND PROFILE  
ALL STAIR TREADS AVAILABLE IN HAMMERED AND ROUND PROFILES



**RTR-133**  
Polished Pewter



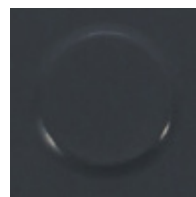
**RTR-123**  
Midnight Charcoal



**RTR-120**  
Onyx Black



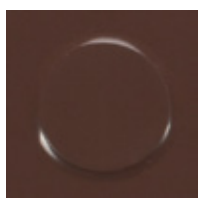
**RTR-134**  
Platinum Gray



**RTR-137**  
Carriage Gray



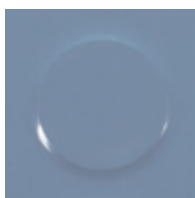
**RTR-140**  
Sandstone Beige



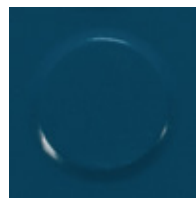
**RTR-148**  
Deep Chestnut



**RTR-183**  
Lime Sorbet



**RTR-190**  
Blue Willow



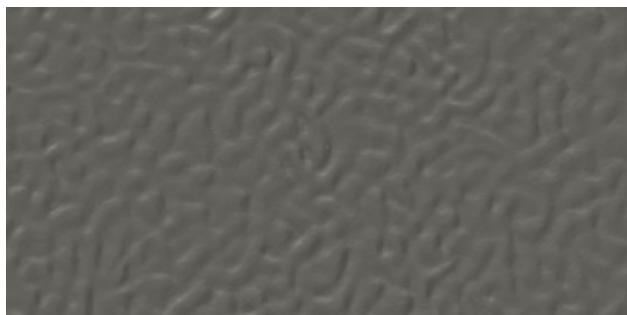
**RTR-191**  
Night Sky

Width: 36" (0.914 m) 48" (1.219 m) 72" (1.828 m) Gauge: 0.125" (3.17 mm) Gauge: 0.140" (3.5 mm)

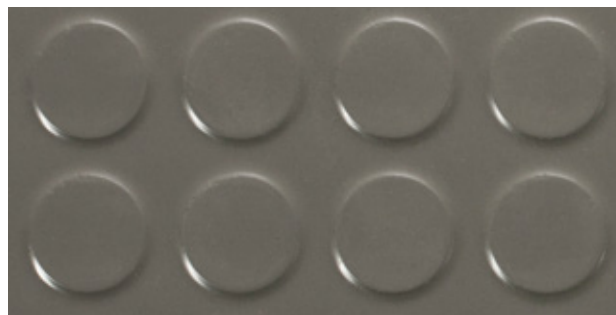
## Profiles

All stair treads available in hammered and round profiles

### HAMMERED



### ROUND



#### How to order:

1. Select product code from list below, e.g.: **RVP**
2. Select Color e.g.: **RVP-55**
3. Select Length e.g.: **RVP-55-36"**
4. Select Carborundum strip color (for visually impaired) e.g.: **RVP-55-36"- 5**  
(use first digit of color code)

#### Product Codes:

##### ABPURE Round

- RTP** Regular Stair Tread
- RVP** Stair Tread for Vis. Impaired
- OPP** Stair Tread with Riser
- OVP** Stair Tread with Riser for Vis. Impaired

##### ABPURE Hammered

- RTM** Regular Stair Tread
- RVM** Stair Tread for Vis. Impaired
- OPM** Stair Tread with Riser
- OVM** Stair Tread with Riser for Vis. Impaired

##### Marathon Round

- RTR** Regular Stair Tread
- RVR** Stair Tread for Vis. Impaired
- OPR** Stair Tread with Riser
- OVR** Stair Tread with Riser for Vis. Impaired

##### Marathon Hammered

- RTH** Regular Stair Tread
- RVH** Stair Tread for Vis. Impaired
- OPH** Stair Tread with Riser
- Ovh** Stair Tread with Riser for Vis. Impaired

Colors shown may vary according to production run.

Interdeco™



# ABPURE® & MARATHON® | RUBBER STAIR TREADS

## TECHNICAL SPECIFICATIONS

Gauge	TREADS (Hammered & Round Profiles)		TREADS WITH RISERS (Hammered & Round Profiles)	
	3.17 mm (round) 3.50 mm (hammered)	0.125" 0.140"	3.17 mm (round) 3.50 mm (hammered)	0.125" 0.140"
Sizes	0.914 m	36"	0.914 m	36"
	1.219 m	48"	1.219 m	48"
	1.828 m	72"	1.828 m	72"
Depth	314.33 mm	12-3/8"	482.6 mm	19"
Nosing Depth	47.63 mm ADA compliant	1-7/8" ADA compliant	47.63 mm ADA compliant	1-7/8" ADA compliant
Nosing Radius	6 mm ADA compliant	1/4" ADA compliant	6 mm ADA compliant	1/4" ADA compliant
<b>Product Classification:</b>				
ASTM F 2169	Resilient Stair Treads		Type TS Rubber Vulcanized Thermoset – Class 2 Group 1 & 2 (Visually Impaired Safety Strip)	
ASTM E 648	Critical Radiant Flux CRF (W/cm <sup>2</sup> )		≥ 0.45	
ASTM E 662	Smoke Density		≤ 450	
ASTM E 989 / E 492	Sound Absorption (with a suspended ceiling)		IIC 59 dB	
ASTM F 925	Chemical Resistance		Meets requirements (details upon request)	
ASTM F 970	Static Load (modified at 1,000 psi for tile)		≤ 0.005"	
ASTM F 1514	Heat Stability (ABPURE)		ΔE ≤ 8	
ASTM F 1515	Light Stability (ABPURE)		ΔE ≤ 8	
Indoor Air Quality (IAQ)	Volatile Organic Compounds (VOC's)		FloorScore Certified by SCS Certification - Registration Number SCS-FS-01492	
Declare			Red List Free	
Adhesive	AD-777 / AD-590 / Zip-Step® tape		Regular traffic (AD-777, Zip-Step tape) / Heavy traffic (AD-590)	
Limited Wear Warranty			10 years	
Resistance to oils and greases	ABPURE® and Marathon® are not recommended for environments where they could be exposed to oils and greases, whether mineral, animal or vegetable.			
Antimicrobial/Antifungal	All ABPURE® and Marathon® Rubber flooring, through its composition and without the use of antimicrobial chemicals, does not promote microbial growth.			

Please note that technical website documents prevail.

### INSTALLATION

Optimal results can only be achieved by following manufacturer's instructions closely. Only adhesives approved by American Biltrite specifically for ABPURE and Marathon should be used for gluing - installation (adhesion). Detailed installation instructions can be found at [www.american-biltrite.com](http://www.american-biltrite.com) and should be carefully followed.



American Biltrite 200 Bank Street, Sherbrooke, Quebec J1H 4K3 Canada | [american-biltrite.com](http://american-biltrite.com)  
To order samples: [flooring@american-biltrite.com](mailto:flooring@american-biltrite.com)  
1.800.437.8743 | Technical Services: 1.800.479.0700

® ABPURE, Marathon and Zip-Step are registered trademarks of American Biltrite