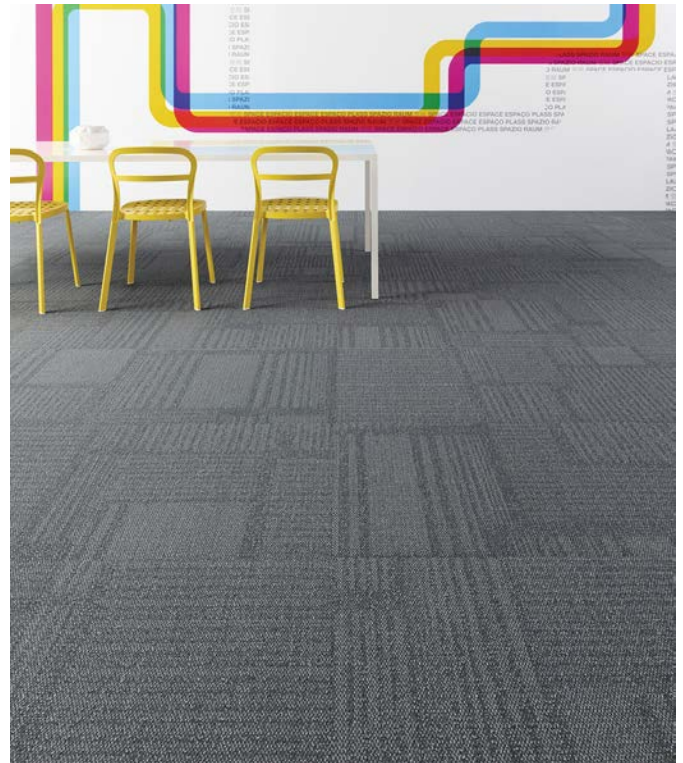


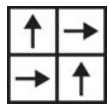
## Centric Tile

Product Type	<b>Carpet Tile</b>
Collection	<b>Space Worx</b>
Style Number	<b>5T124</b>
Construction	<b>Multi-Level Pattern Loop</b>
Fiber	<b>Ecosolution Q® Nylon</b>
Dye Method	<b>100% Solution Dyed</b>
Primary Backing	<b>Synthetic</b>
Secondary Backing	<b>Ecworx® Tile</b>
Protective Treatments	<b>SSP® Shaw Soil Protection</b>
Recommended Adhesive	<b>LokWorx+ Carpet Tile Adhesive, Shaw 5100, Shaw 4151, LokDots, LokWorx, Shaw 3800 or Shaw 5036</b>

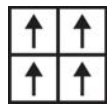
	u.s.	metric
Product Size	<b>24 in x 24 in</b>	<b>61 cm x 61 cm</b>
Area per Carton	<b>48 ft<sup>2</sup></b>	<b>4.46 m<sup>2</sup></b>
Pieces per Carton	<b>12 pcs</b>	
Gauge	<b>1/12 in</b>	<b>47.2 per 10 cm</b>
Stitches	<b>9.0 per in</b>	<b>36.5 per 10 cm</b>
Finished Pile Thickness	<b>0.085 in</b>	<b>2.16 mm</b>
Average Density	<b>6353 oz/yd<sup>3</sup></b>	<b>0.235 g/cm<sup>3</sup></b>
Kilotex		<b>9.27</b>
Total Thickness	<b>0.224 in</b>	<b>5.69 mm</b>
Tufted Weight	<b>15 oz/yd<sup>2</sup></b>	<b>508.6 g/m<sup>2</sup></b>



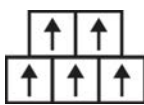
### Recommended Installation Method



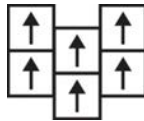
**Quarter Turn**



**Monolithic**



**Brick**



**Ashlar**

### Coordinating Products

Carpet Tile: **Basic Tile, Primary Tile, Surround Tile**

### Performance + Testing

Antimicrobial Assessment	<b>Passes (AATCC-174) (When installed using Shaw 5036 adhesive)</b>
Pill Test	<b>Pass</b>
Radiant Panel	<b>Class I</b>
NBS Smoke	<b>Less Than 450</b>
CRI Green Label Plus (GLP)	<b>CRI Green Label Plus (GLP)   GLP9968</b>
ADA Compliance	<b>&gt;0.6, meets the recommended static coefficient of friction for ADA walking surfaces and accessible routes***</b>

Test Reports may be included or listed by the manufacturing/inventory style number as opposed to the noted selling style number.

### Warranties

#### Lifetime Commercial Limited Warranty

Corporate Headquarters +1 800 257 7429 | +1 706 532 7984 | Atlanta +1 404 853 7429 | Bengaluru +91 80 6773 0202 | Beijing +86 10 6568 588 | Chicago +1 312 467 1331 | Dubai +971 4 584 6956 | Hong Kong +852 2623 0371 | Latin America (Miami) +1 305 827 5912 | London +44 207 961 4120 | Los Angeles +1 800 233 1614 | Melbourne +61 3 9939 8543 | Mexico City +55 5010 7600 | Mumbai +91 22 6284 5050 | Nantong +86 400 800 7429 | New York +1 212 953 7429 | Paris +33 (0) 1 81 22 44 39 | San Francisco +1 415 955 1920 | Santiago +562 2431 5000 x 550 | São Paulo +55 11 3071 1702 | Shanghai +86 21 3338 4000 | Singapore +65 6733 1811 | Sydney +1 800 556 302

## Diversity, Equity & Inclusion

Shaw Contract is dedicated to providing clients with a building chemistry that's safe and dependable. Working together, we will help you meet your goals as they pertain to material health. EcoWorx® products with Eco Solution Q® Nylon are Cradle to Cradle Certified® Silver and assessed for impacts on human health and the environment. This product can be recycled. When it's time to replace, we can collect and recycle it through our Environmental Guarantee.\*

## Material Health & Environmental Certifications

### Health & Wellbeing

Material Ingredient Transparency

**Cradle to Cradle Certified® | Silver Level (Version 4.0)**  
**Health Product Declaration (HPD) | 1,000 ppm Disclosure**  
**Living Building Challenge (LBC) | Free of Red List Chemicals**  
**Declare | LBC Compliant**  
**NSF 140 | Gold**

Indoor Air Quality

**CRI Green Label Plus (GLP) | GLP9968**

### Climate Impact

Environmental Product Declaration (EPD)

**3rd Party Certified in Accordance with ISO14044, ISO14025 & EN15804**

Total Recycled Content

**39% (Pre-Consumer 39% | Post-Consumer 0%)**

Product Packaging

**100% Recyclable**

### Global Product Assessment

**Building Research Establishment (BRE) | Certified**  
**Good Environmental Choice Australia (GECA) | Certified**  
**Singapore Green Label | Certified**

**GSA | Approved**

**CE Marking (EN 14041) | 3rd Party Certified**

**Environmental Guarantee\* | Shaw Pledges to Transport And Recycle Any Ecoworx Tile or Broadloom Carpet Within The United States And Canada At No Cost to The Customer.**

**Country of Origin\*\* | USA**

## Leed v4 Contribution Credits

MR Credit: Building Product Disclosure and Optimization  
 Environmental Product Declarations - Option 1: Environmental Product Declaration (EPD)

**3rd Party Certified in Accordance with ISO14044, ISO14025 & EN15804**

MR Credit: Building Product Disclosure and Optimization  
 Material Ingredients - Option 1: Material Ingredient Reporting

**C2C Silver Level (Version 4.0)**

MR Credit: Building Product Disclosure and Optimization  
 Material Ingredients - Option 2: Material Ingredient Optimization

**3rd Party Certified in Accordance with ISO14044, ISO14025 & EN15804**

MR Credit: Building Product Disclosure and Optimization  
 Sourcing of Raw Materials - Option 2: Leadership Extraction Practices

**Environmental Guarantee: Shaw Pledges to Transport And Recycle Any Ecoworx Tile or Broadloom Carpet Within The United States And Canada At No Cost to The Customer.**

EQ Credit: Low Emitting Materials  
 Option 1: Product Category Calculations

**Green Label Plus Certification: GLP9968**

MR Credit: Interiors Life-Cycle Impact Reduction  
 Option 3: Design for Flexibility

**Ecoworx Tile with Lokdots Installation System**



## Additional Information

\* To learn more about the recyclability of our products and our Environmental Guarantee, please visit [shawcontract.com/sustainability](http://shawcontract.com/sustainability).

\*\*Meets or exceeds all local and national regulations in country of manufacture.

\*\*\*This carpet is manufactured to be ADA compliant, but to be fully ADA compliant, the end-user must ensure the carpet is adhered to the floor and installed as outlined in the ADA standards.

[Installation Guidelines](#)

[Maintenance Guidelines](#)

Specifications are subject to nominal manufacturing variance. Material supply and/or manufacturing processes may necessitate changes without notice.

This product is an exclusive design and may not be duplicated in any manner. Use of this design in the creation of another product design is also strictly prohibited.

Visit [shawcontract.com/testing](http://shawcontract.com/testing) for more information.

