

# FLOR

Creative  
Rug  
Design

SPRING 2022

Interdeco™

WE WENT  
MOD IN  
PALM  
SPRINGS  
Pg. 18

Cover: Hollin Hills in  
Cloud shown on pg. 22.

*CLEAR  
CONSCIENCE*

INTRODUCING CARBON NEGATIVE RUGS

Pg. 3

# HIGH STYLE. LOW IMPACT.

*Introducing our first-ever  
carbon negative products*

It's easy to forget that carbon is one of nature's basic building blocks. At FLOR, we are utilizing materials that have sequestered carbon from the atmosphere and using it to create our first ever carbon negative area rugs.

While all of our rugs are carbon neutral across their lifecycle, our new collection draws more carbon from the air than it releases from the extraction of the raw materials through manufacturing. The carbon negative materials in the CQuest™ backing, in combination with ECONYL yarn and our tufting process, results in a carbon negative carpet tile. The finished product brings together durability, beautiful design, and a negative carbon footprint that ultimately benefits you, and the planet.




[FLOR.com/carbon](https://www.flor.com/carbon)



*New*

## Peninsula

21-1551 

Like the bands of land and water that surround a peninsula, this style features gently rolling stripes of color. *Shown in Black, with Stratosphere in Pigeon, and Hemisphere in Pigeon, pg. 5.*

Must be installed using FLORdot+™.

\$20 / TILE

5' x 7' — \$240

8' x 10' — \$600

10' x 12' — \$840

Create your own size at [FLOR.com](https://www.flor.com)



Black



Grey



Mahogany

*Get The Look*

See how we created this rug at  
[FLOR.com/getthelook](https://www.flor.com/getthelook)



## live zero

We made a goal to reach zero negative impact on the Earth by 2020—and we reached it one year early in 2019. At FLOR, we aim to do business in ways that give back whatever is taken from the Earth. We've worked hard to make sure all of our products are manufactured with renewable energy, and recyclable too. Through our Return & Recycle program, we keep millions of pounds of carpet out of landfills each year.



## a natural fit

Nature is our muse at FLOR, and not just for our Earth-inspired rugs. Nature has the power to self-regulate the climate, and we want to do the same. That's why we're exploring ways to run our factories more like ecosystems. Our pilot program, Factory as a Forest, aims to go beyond doing less harm and start actively benefiting our planet.



## create with carbon

We are actively using and exploring raw materials that use plant-derived carbon or sequester carbon to make our products. Guided by materials science, we've added new thinking and innovative materials to develop backings with a negative carbon footprint.




## act for the future

As we think about tomorrow, today, we know business cannot be conducted as usual. We're constantly reinventing our business models to make a positive impact. By using Aquafil's ECONYL regenerated nylon, made from nearly all recycled waste, like fishing nets or textile scraps, we work towards lowering the environmental impact of brand new nylon that uses new resources. This supports our sustainability goals to source recycled content for our carpet tiles.



New

### Hemisphere

21-1549 

Ground your space with a design that mimics the layers of the Earth. *Shown in Pigeon.*

Must be installed using FLORdot+.

\$20 / TILE

—

5' x 7' — \$240

8' x 10' — \$600

10' x 12' — \$840



Pigeon

Black

Tan




Rugs with this symbol are carbon negative, meaning they draw more carbon from the atmosphere than they create. We achieved this by using our CQuest™ BioX backing and ECONYL yarns. They must be installed using our new FLORdot+, which are green in color.

To learn more visit [FLOR.com/carbon](https://FLOR.com/carbon)

New

### Stratosphere

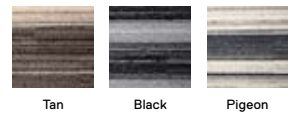
21-1550 

Talk about a breath of fresh air. This light and breezy style is inspired by the Earth's atmosphere. *Shown in Tan with Hemisphere in Tan, pg. 4, and Peninsula in Mahogany, pg. 3.*

Must be installed using FLORdot+.

\$20 / TILE

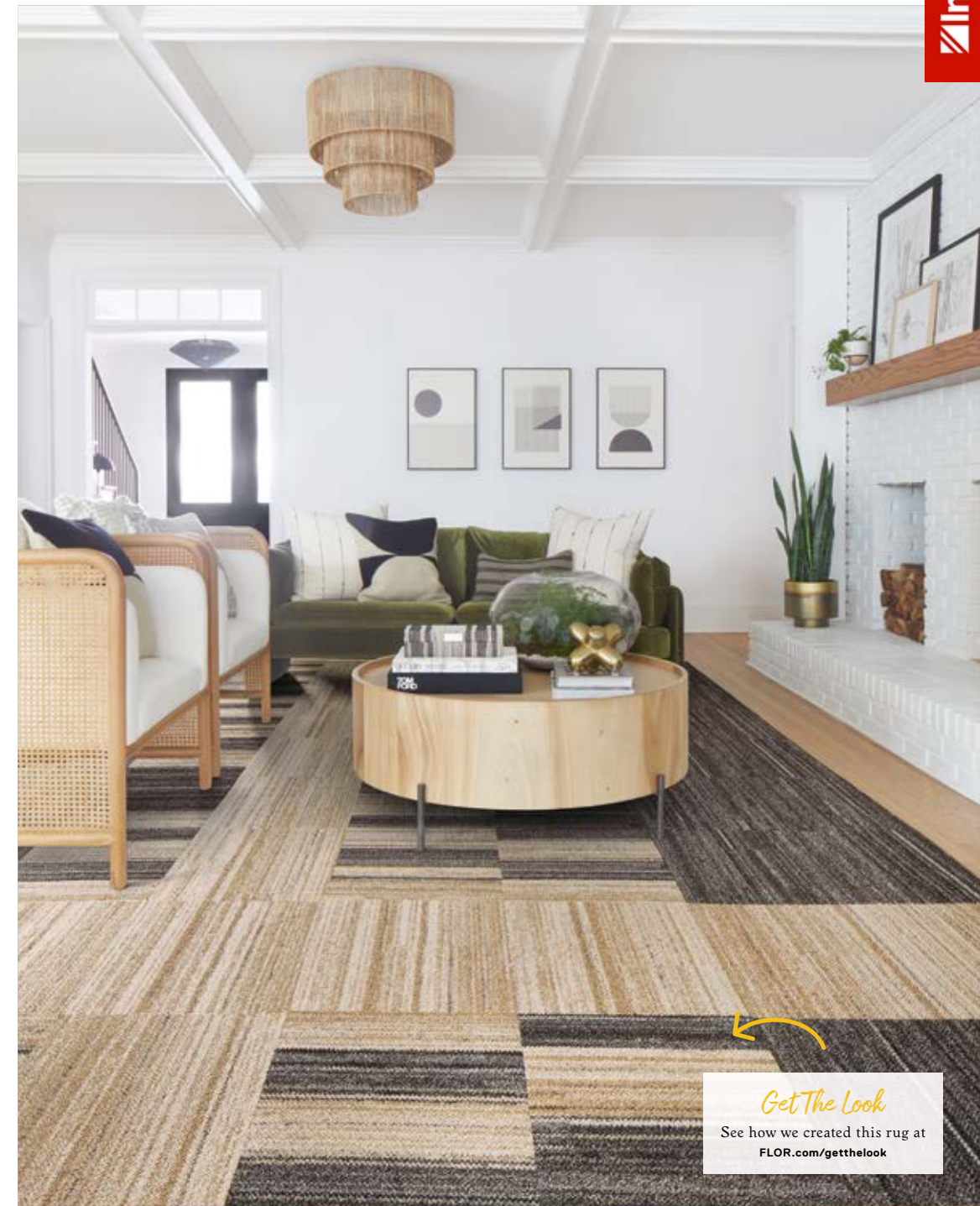
5' x 7' — \$240, 8' x 10' — \$600, 10' x 12' — \$840



Tan

Black

Pigeon



*Get The Look*  
See how we created this rug at [FLOR.com/getthelook](https://FLOR.com/getthelook)



# NATURAL BEAUTY

Connect to nature with Earth-inspired designs that are good for the planet and look beautiful in your home.



## Tweed Indeed

21-1454

Elegant, understated, and rich. This classic tweed pattern is similar in look and feel to a flat weave rug. *Shown in Lichen.*

\$18 / TILE

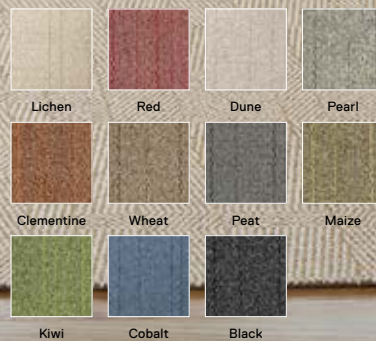
—

5' x 7' — \$216

8' x 10' — \$540

10' x 12' — \$756

Create your own size at FLOR.com



## Morning Coffee

21-1039

A signature blend of varied colors and loop yarns for a rich and robust surface that will perk up the most demanding spaces. *Shown in Half & Half.*

\$14 / TILE

—

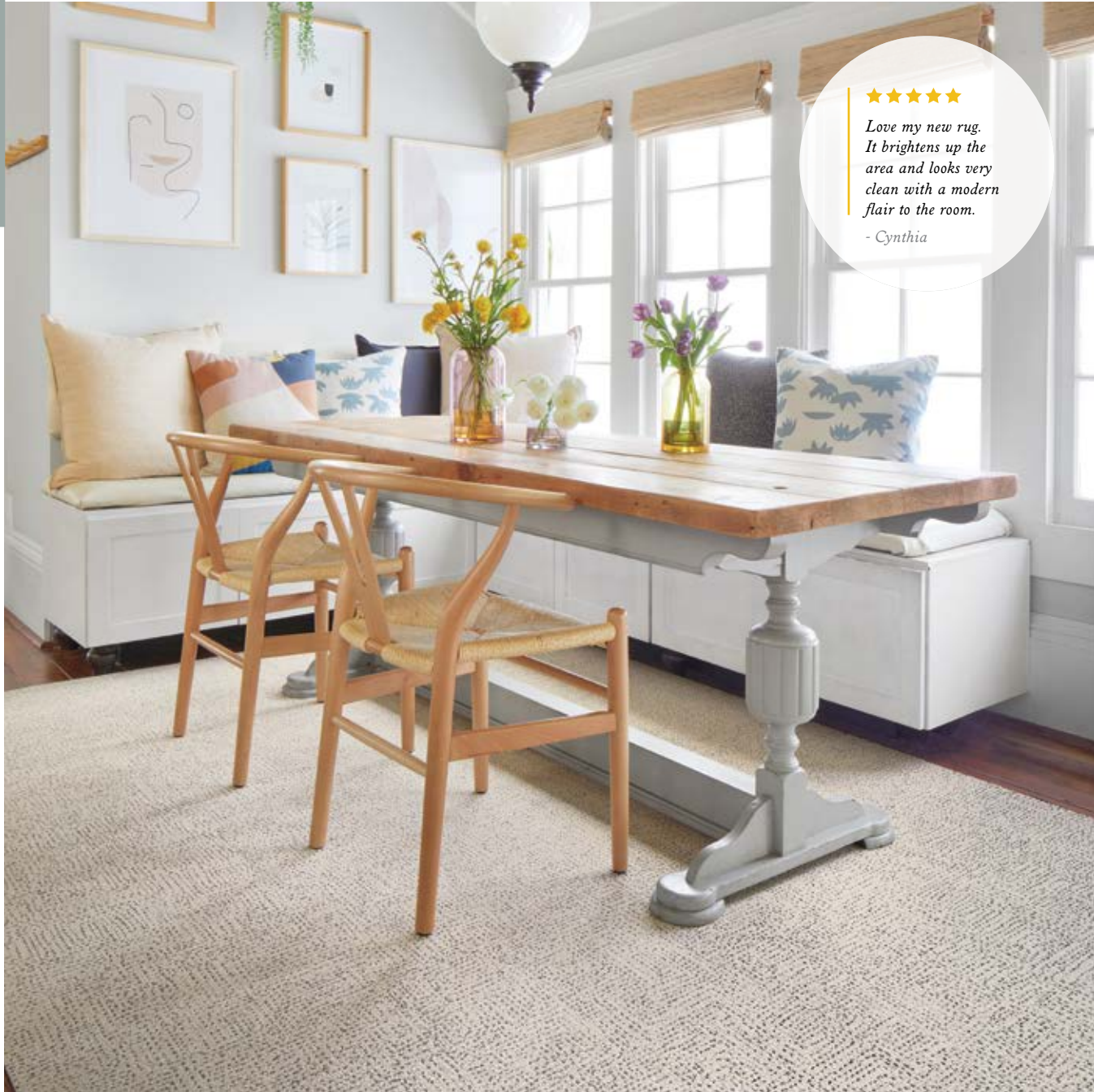
5' x 7' — \$168

8' x 10' — \$420

10' x 12' — \$588


Create your own size at FLOR.com





★★★★★  
 Love my new rug. It brightens up the area and looks very clean with a modern flair to the room.  
 - Cynthia

\$24 / TILE  
 -  
 5' x 7' - \$288  
 8' x 10' - \$720  
 10' x 12' - \$1,008  
 Create your own size at FLOR.com

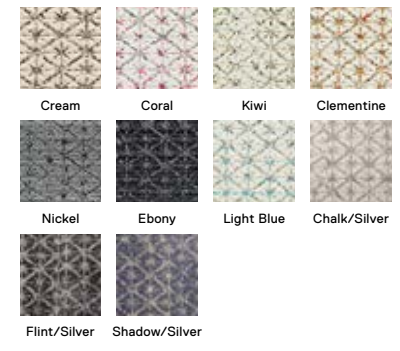
**Hemline**  
 21-1524   
 Speckled with organic dots, this understated neutral rug lays a stylish foundation.  
 Shown in Pearl/Grey.



**Vintage Vibe**

21-1385  
 The diamond pattern features subtle imperfections to honor the ancient Moroccan weaving technique it mimics. Available with metallic accents—or not. Shown in Cream.

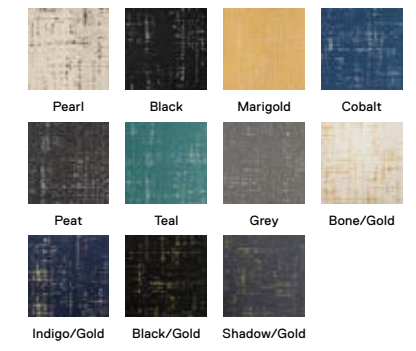
\$30 - \$32 / TILE  
 -  
 5' x 7' - \$360 - \$384  
 8' x 10' - \$900 - \$960  
 10' x 12' - \$1,260 - \$1,344  
 Create your own size at FLOR.com



**Tuxedo Pocket**


21-1451  
 Like the grooves of a vinyl record, this rug shows off subtle hatchings with style and confidence without being too showy. Available with metallic accents—or not. Shown in Pearl.

\$24 - \$28 / TILE  
 -  
 5' x 7' - \$288 - \$336  
 8' x 10' - \$720 - \$840  
 10' x 12' - \$1,008 - \$1,176  
 Create your own size at FLOR.com





## Terrain

21-1534 

Let's get graphic. This rug takes inspiration from abstract art to add show-stopping design in a neutral palette that's versatile enough for any space. *Shown in Chalk.*

\$24 / TILE

5' x 7' - \$288

8' x 10' - \$720

10' x 12' - \$1,008

Create your own size at FLOR.com



Chalk

Pearl



Still deciding?  
**SAMPLE WITH  
\$2 SWATCHES**

## Anthracite

21-1494

Sophistication that shines. Like the subtle shimmer of its namesake stone, metallic threads make this style stand out. *Shown in Pearl/Gold.*

\$32 / TILE

5' x 7' - \$384

8' x 10' - \$960

10' x 12' - \$1,344

Create your own size at FLOR.com



Pearl/Gold

Flint/Silver

Chalk/Silver



\$26 / TILE

5' x 7' - \$312

8' x 10' - \$780

10' x 12' - \$1,092

Create your own size at FLOR.com

## Palm Reader

21-1467

A hint of nature and touch of glamour come together in this lush rug style. This pattern's easy-going personality suits a range of styles, from the dramatic to Mid-Century Modern. *Shown in Kale.*



Kale

Aquamarine

Tundra

Grey

Send us your used FLOR tiles and we'll recycle them into brand-new looks. Visit [FLOR.com/recycle](https://www.flor.com/recycle).



## Among The Wildflowers

21-1452

Inspired by the Arts and Crafts movement, this graphic floral pattern evokes colors found in meadows. *Shown in Ivy.*

\$25 / TILE

- 
- 5' x 7' - \$300
- 8' x 10' - \$750
- 10' x 12' - \$1,050

Create your own size at FLOR.com



Ivy Grey Periwinkle Palm

## Foothills

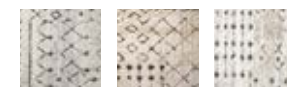
21-1539

Detailed and distinct, this geometric pattern in a neutral palette is a natural centerpiece in any room. *Shown in Bone.*

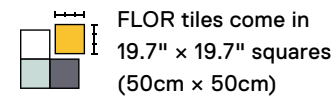
\$22 / TILE

- 
- 5' x 7' - \$264
- 8' x 10' - \$660
- 10' x 12' - \$924

Create your own size at FLOR.com



Bone Eggnog Bright White



FLOR tiles come in 19.7" x 19.7" squares (50cm x 50cm)



## London Twill

21-1504

From kings to newsboys, British menswear has inspired them all—including this woven design. *Shown in Flint/Pearl.*

\$18 / TILE

- 
- 5' x 7' - \$216
- 8' x 10' - \$540
- 10' x 12' - \$756

Create your own size at FLOR.com



Flint/Pearl Pigeon Mica Flint



Updating your look for Spring? No worries! Most styles ship within two business days.



## Hard Lines

21-1526

High and low pile heights meet offset angles to create a unique pattern of lines and textures. *Shown in Iron.*

\$26 / TILE

- 
- 5' x 7' - \$312
- 8' x 10' - \$780
- 10' x 12' - \$1,092


Create your own size at FLOR.com



Iron Beige Loam



## Trade Winds

21-1540 

This soothing style brings to mind wide open skies with a versatile pattern perfect for every look, from boho to mod. *Shown in Bright White.*

\$26 / TILE

—

5' × 7' — \$312

8' × 10' — \$780

10' × 12' — \$1,092

Create your own size at FLOR.com



Bright White

Eggnog

Bone



## Fully Barked

21-1409

Deep ridges of velvet in earthy shades make a rug that is both durable and attractive. *Shown in Beige.*

\$16 / TILE

—

5' × 7' — \$192

8' × 10' — \$480

10' × 12' — \$672

Create your own size at FLOR.com



Beige

Fog

Marsh

Frost

Tundra

Chalk

Pigeon

Sage

Oyster

Titanium

Stratus

Mahogany

## Oasis Retreat

21-1455

Abstract and inviting, this style is a modern take on a traditional rug. Travels near and far serve as the inspiration for this native pattern. *Shown in Granite.*

\$24 / TILE

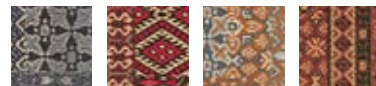
—

5' × 7' — \$288

8' × 10' — \$720

10' × 12' — \$1,008

Create your own size at FLOR.com



Granite


Crimson

Copper

Mahogany



## Memory Lane

21-1535 

With rows of textured grooves, this rug adds an air of relaxed sophistication to any room. *Shown in Pearl/Flint.*

\$24 / TILE

—

5' × 7' — \$288

8' × 10' — \$720

10' × 12' — \$1,008

Create your own size at FLOR.com

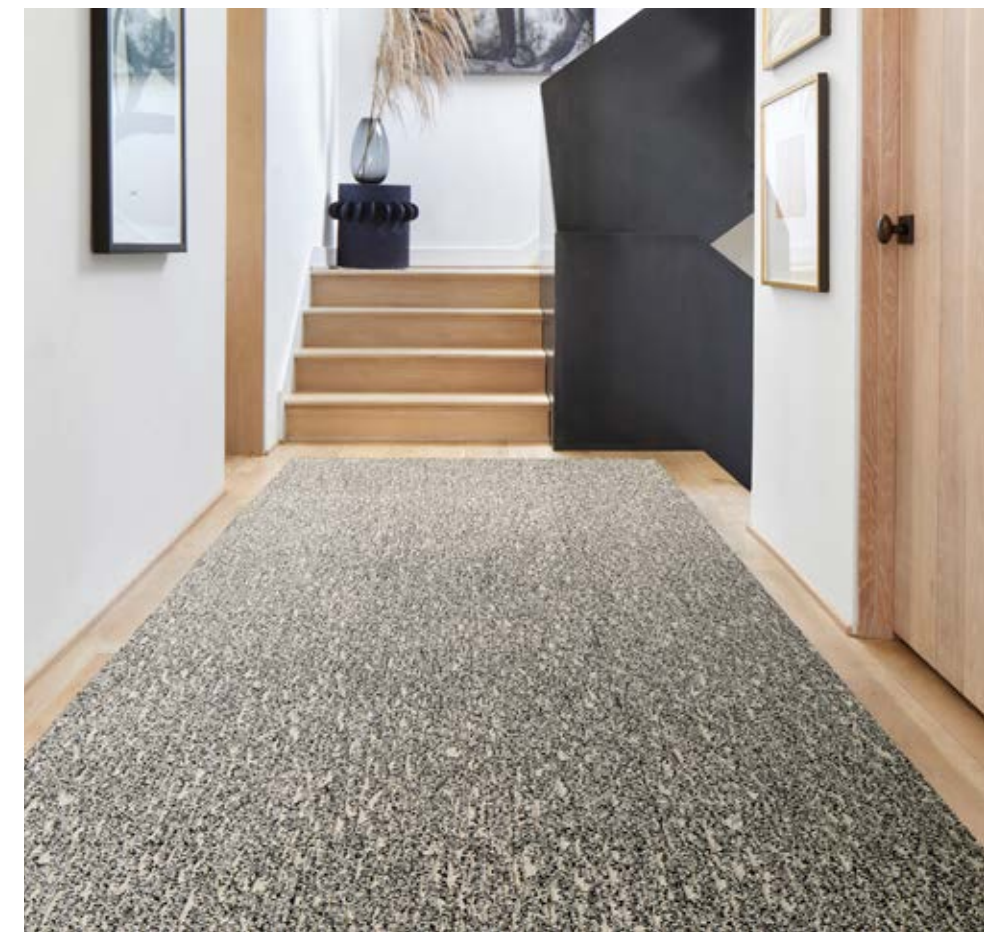


Pearl/Flint

Pearl

Grey

Flint



Payments made easy. Learn more at [FLOR.com/affirm](https://FLOR.com/affirm)





## Splish Splash

21-1529

Inspired by vibrant watercolor paintings, this versatile abstract patterned rug features a sophisticated yet colorful palette. *Shown in Teal.*

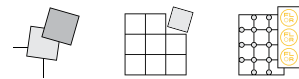
\$28 / TILE

- 5' x 7' - \$336
- 8' x 10' - \$840
- 10' x 12' - \$1,176

Create your own size at FLOR.com



Teal Lapis Berry



FLOR Tile + FLORdot™ = Rug

## It's Snow Problem

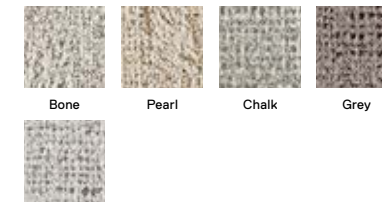
21-1412

This multilevel loop style is a quiet delight any time of year. Makes a great neutral area rug for the comfort and traffic of living rooms and dens. *Shown in Bone.*

\$22 / TILE

- 5' x 7' - \$264
- 8' x 10' - \$660
- 10' x 12' - \$924

Create your own size at FLOR.com



Bone Pearl Chalk Grey

Frost



## Mod Cafe

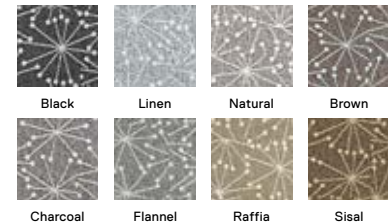
21-1447

Space-age modern takes center stage with a rug that uses bold graphics in muted shades to bring the right amount of retro to a room. *Shown in Black.*

\$26 / TILE

- 5' x 7' - \$312
- 8' x 10' - \$780
- 10' x 12' - \$1,092

Create your own size at FLOR.com



## Knit Wit

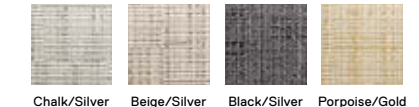
21-1528

Distinctive yet distinguished, this cozy Berber rug is woven with metallic threading for just a touch of shine. *Shown in Chalk/Silver.*

\$32 / TILE

- 5' x 7' - \$384
- 8' x 10' - \$960
- 10' x 12' - \$1,344

Create your own size at FLOR.com



GONE MOD IN

*Palm Springs*

We're mad for Mid-Century Mod, and what better way to celebrate this iconic style than decking out a historic hotel with FLOR for Modernism Week? Check in to Limón, a chic boutique hotel in Palm Springs, and check it out.

*To read the full story about FLOR's collaboration with Modernism Week visit*

[FLOR.com/ModernismWeek](https://FLOR.com/ModernismWeek)



Constructed in 1964 and originally built as an apartment house named Stuart Manor, Limón is one of the most unique buildings in Palm Springs as an all-steel structure.



Interdeco™



*Signature Rug*  
**Retro Shag**  
63-2052

\$353 - \$1,265

Available in two colors, five sizes.



Limón serves as a one-group hotel that sleeps 14 and includes a large communal kitchen, outdoor BBQ area, spa, and pool.

“We were inspired by the 1968 Mexico City Olympics — and we aren't afraid of color. FLOR's breadth of selection, design, and colors really flowed well with the property.

**In The Deep**

21-1403

Shag has become a stylish, modern standard. Deep and cozy, it's easy to clean and feels comfy underfoot. *Shown in Bone, Maize, Eggnog, and Clementine with Made You Look in Coral, pg. 20.*

\$24 / TILE

5' x 7' - \$288

8' x 10' - \$720

10' x 12' - \$1,008

Create your own size at [FLOR.com](https://FLOR.com)





*Get The Look*  
See how we created this rug at  
[FLOR.com/getthelook](https://FLOR.com/getthelook)

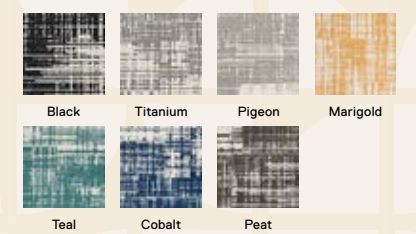


**Dappled Daylight**

21-1446  
This timeless look is versatile enough to blend with any color. But the bold contrasts make it a pattern that's more than capable of standing out. *Shown in Black.*

\$24 / TILE  
-  
5' x 7' - \$288  
8' x 10' - \$720  
10' x 12' - \$1,008

Create your own size at FLOR.com



\$16 / TILE  
-  
5' x 7' - \$192  
8' x 10' - \$480  
10' x 12' - \$672  
Create your own size at FLOR.com

**Made You Look**  
21-1361  
Bring every big, colorful dream to life. This box of crayons works well across collections and can be cut to create a unique design. *Shown in Bone and Marigold.*

“The ability to create rugs to fit the size of the room is amazing. When design and function work together, you have an amazing product.”



**Upcycle**

21-1399  
A stripe that's as unique as it is sturdy, making it a great choice for active spaces. *Shown in Teal.*

\$14 / TILE  
-  
5' x 7' - \$168  
8' x 10' - \$420  
10' x 12' - \$588

Create your own size at FLOR.com

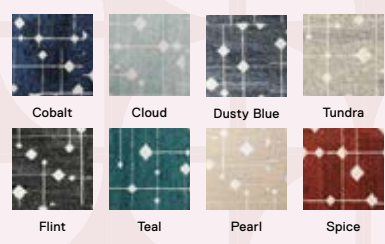




**Hollin Hills**  
21-1479  
This Mid-Century inspired look tips its hat to an iconic design of the fifties: the Nelson Ball Clock. *Shown in Cobalt.*

\$25 / TILE  
—  
5' x 7' — \$300  
8' x 10' — \$750  
10' x 12' — \$1,050

Create your own size at FLOR.com



**High Hopes**  
21-1533  
What's bright, playful, and patterned all over? This rug makes a statement in lively colorways to add dimension to your home. *Shown in Blush.*

\$26 / TILE  
—  
5' x 7' — \$312  
8' x 10' — \$780  
10' x 12' — \$1,092

Create your own size at FLOR.com



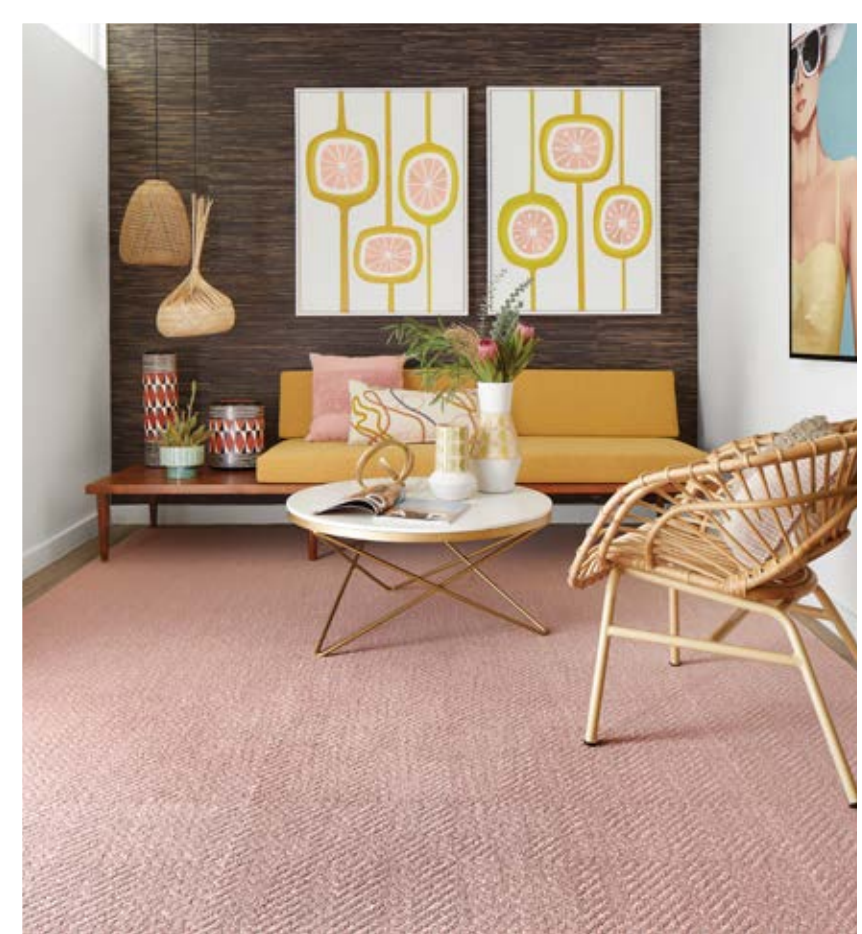
**New**  
**Open Invitation**

21-1543

Come one, come all. This sisal-inspired style comes in neutral and fun colors to be enjoyed by anyone, anywhere. *Shown in Blush. See more on pg. 40.*

\$20 / TILE  
—  
5' x 7' — \$240  
8' x 10' — \$600  
10' x 12' — \$840

Create your own size at FLOR.com



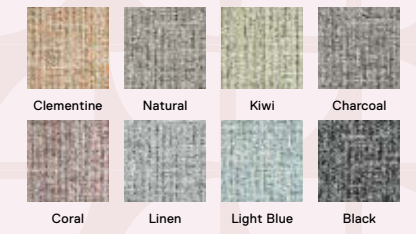
**Tailored Touch**

21-1450

Keep the space relaxed and inviting with this nubby, speckled Berber style. Shades of color blend in a subtle way through each loop, giving it depth and interest. *Shown in Clementine.*

\$24 / TILE  
—  
5' x 7' — \$288  
8' x 10' — \$720  
10' x 12' — \$1,008

Create your own size at FLOR.com



# WORK, PLAY, LIVE

These cross-functional rugs feature a modular design that can adapt to any situation on the fly.



New

## Knotting Hem

21-1544

Get lost in this labyrinth style featuring subtle diamonds and bouclé-like weave that will have you feeling perfectly knotty. *Shown in Pearl/Flint.*

\$24 / TILE

5' x 7' - \$288

8' x 10' - \$720

10' x 12' - \$1,008

Create your own size at FLOR.com



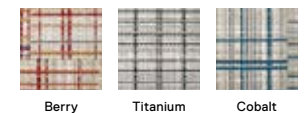
Pearl/Flint Pearl/Grey Flint/Pearl



## Savile Row

21-1541

Button up your space with a rug inspired by the namesake London street famous for bespoke menswear. *Shown in Berry.*



Berry Titanium Cobalt

\$24 / TILE

5' x 7' - \$288, 8' x 10' - \$720, 10' x 12' - \$1,008

FLOR tiles come in 19.7" x 19.7" squares (50cm x 50cm)



## Down To Earth

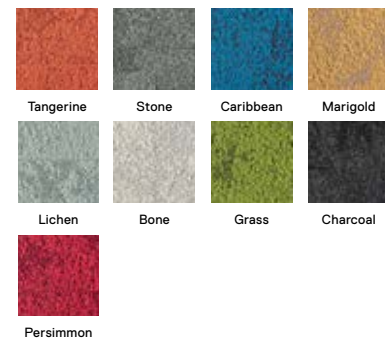
21-1402

Rugged in look, soft in texture. The subtle color variations found in nature are a textural feast for the eyes and toes. This style works well with Urban Nature. *Shown in Tangerine.*

\$24 / TILE

5' x 7' - \$288  
8' x 10' - \$720  
10' x 12' - \$1,008

Create your own size at FLOR.com



## Rush Street

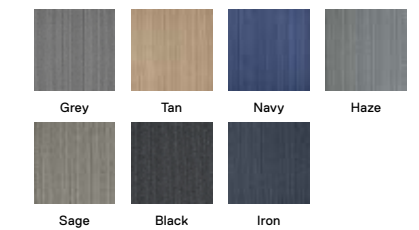
21-1440

With elegant stripes and a short weave, this rug is right at home in busy rooms. *Shown in Grey.*

\$12 / TILE

5' x 7' - \$144  
8' x 10' - \$360  
10' x 12' - \$504

Create your own size at FLOR.com



## Be Cool

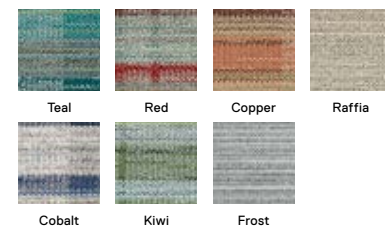
21-1458

Inspired by a traditional weaving technique, this style's handmade look adds a unique texture to any room. *Shown in Teal.*

\$16 / TILE

5' x 7' - \$192  
8' x 10' - \$480  
10' x 12' - \$672

Create your own size at FLOR.com



## Twisted Spokes

21-1394

This graphic pattern adds dimension and interest to any space. Super fun for playrooms and still sophisticated for grown up playrooms, too. *Shown in Black.*

\$20 / TILE

5' x 7' - \$240  
8' x 10' - \$600  
10' x 12' - \$840

Create your own size at FLOR.com





## Full Break

21-1538

Talk about handsome. This menswear-inspired pattern gives any room a tailor made look. *Shown in Stone.*

\$14 / TILE

—

5' x 7' — \$168

8' x 10' — \$420

10' x 12' — \$588

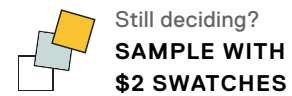
Create your own size at FLOR.com



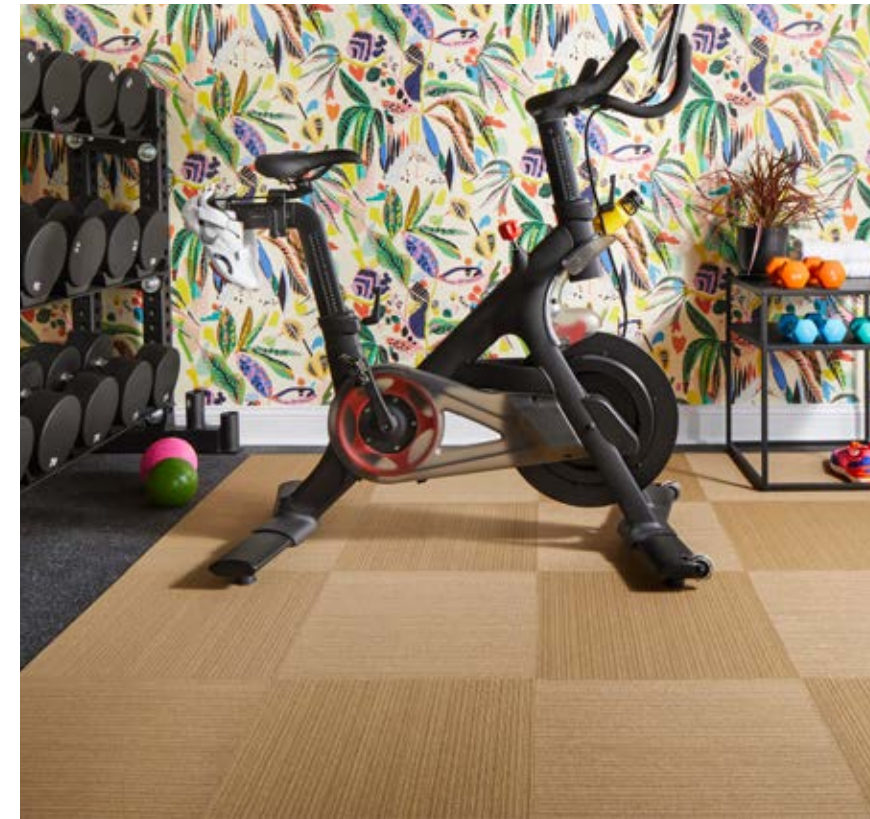
Stone

Mica

Black



Still deciding?  
**SAMPLE WITH  
\$2 SWATCHES**



## Level Setting

21-1341

Heavy foot traffic is no problem for this rug's tidy rows of tightly looped nylon. *Shown in Gold.*

\$14 / TILE

—

5' x 7' — \$168

8' x 10' — \$420

10' x 12' — \$588

Create your own size at FLOR.com



Gold

Black

Olive

Grey



Blue

## Skyfall

21-1480

Why not shoot for the stars? Give your space the Mid-Century treatment with a vintage design reminiscent of a sparkling night sky. *Shown in Flint.*

\$25 / TILE

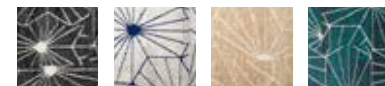
—

5' x 7' — \$300

8' x 10' — \$750

10' x 12' — \$1,050

Create your own size at FLOR.com



Flint

Chalk

Eggnog

Turquoise



Cobalt



## Ticket To Ride

21-1523

The clean, simple lines and fine details of this flatweave-style rug fit right in to any room. *Shown in Pigeon.*

\$20 / TILE

—

5' x 7' — \$240

8' x 10' — \$600

10' x 12' — \$840

Create your own size at FLOR.com



Pigeon

Flint/Pearl

Black

Mica



Flint

FLORdots™ hold your tiles together, don't stick to the floor, and are included in every order.

# BOLD MOVES

From bright colors and organic patterns to neutral, reimagined classics, unleash your creativity with a rug that's all about you.

*New*  
**You're So Vein**  
 21-1542

Metallic veining and rich hues come together in this style reminiscent of marble.  
*Shown in Cobalt/Silver.*

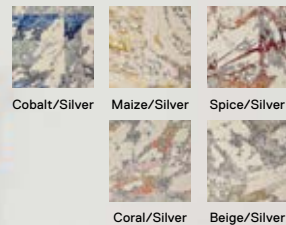
\$28 / TILE

5' x 7' - \$336

8' x 10' - \$840

10' x 12' - \$1,176

Create your own size at FLOR.com



IT'S ALL A PART OF THE  
 GRAND RESTORATION



*Get The Look*  
 See how we created this rug at  
[FLOR.com/getthelook](https://www.flor.com/getthelook)

**Fedora**  
 21-1019

A classic with an original backstory: It's made from plastic bottles. It feels like felt and looks dapper in any room. *Shown in Salt, Juniper, Turmeric, and Zinc.*

\$9 / TILE

5' x 7' - \$108, 8' x 10' - \$270, 10' x 12' - \$378

Create your own size at FLOR.com







\$32 / TILE

5' x 7' - \$384

8' x 10' - \$960

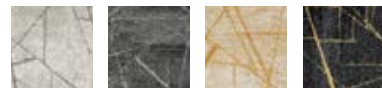
10' x 12' - \$1,344

Create your own size at FLOR.com

## Chasing Pavement

21-1484

For a sophisticated pattern that pops, dress up your room in our favorite neutral-metallic. *Shown in Chalk/Silver.*



Chalk/Silver Titanium/Silver Pearl/Gold Flint/Gold

## Doe Re Mi

21-1487

Where classic and contemporary come together. This antelope pattern blends beautifully for a smooth and seamless look. *Shown in Indigo.*

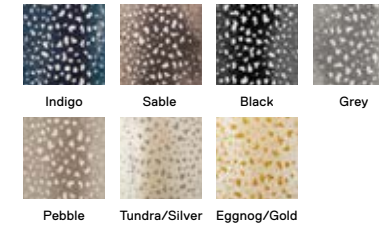
\$26 - \$28 / TILE

5' x 7' - \$312 - \$336

8' x 10' - \$780 - \$840

10' x 12' - \$1,092 - \$1,176

Create your own size at FLOR.com



FLOR tiles come in 19.7" x 19.7" squares (50cm x 50cm)



## Heavy Metal

21-1530

Go big or go home. This show-stopping pattern features metallic threads for a look with major wow factor. *Shown in Pearl/Gold.*

\$32 / TILE

—

5' × 7' — \$384

8' × 10' — \$960

10' × 12' — \$1,344

Create your own size at FLOR.com



Pearl/Gold Tundra/Silver Flint/Gold Titanium/Silver



## Mod Cow

21-1357

This classic hide design mimics the natural patterns found on the farm—every square is an original. *Shown in Tan.*

\$25 / TILE

—

5' × 7' — \$300

8' × 10' — \$750

10' × 12' — \$1,050

Create your own size at FLOR.com



Tan Brown Black Grey



## Gatsby

21-1520

Inspired by the Art Deco designs of the 1920s, this reimagined Greek key pattern is woven with opulent metallic threads. *Shown in Bone/Silver.*

\$32 / TILE

—

5' × 7' — \$384

8' × 10' — \$960

10' × 12' — \$1,344

Create your own size at FLOR.com



Bone/Silver Flint/Gold Spice/Gold Turquoise/Silver

## Lilting

21-1425

Designed to capture the image of sound rippling over a still body of water, this pattern is texturally complex and visually stunning. *Shown in Multi.*

\$34 / TILE

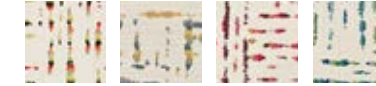
—

5' × 7' — \$408

8' × 10' — \$1,020

10' × 12' — \$1,428

Create your own size at FLOR.com



Multi Marigold Berry Teal



Grey Mahogany Moss Granite



Payments made easy. Learn more at [FLOR.com/affirm](https://FLOR.com/affirm)



## To Dye For

21-1536

This refined tie-dye rug is inspired by Shibori, an ancient Japanese dyeing technique. *Shown in Bone.*

\$24 / TILE

—

5' × 7' — \$288

8' × 10' — \$720

10' × 12' — \$1,008

Create your own size at FLOR.com



Bone

Indigo



## Fan Out

21-1537

With a pattern reminiscent of paper fans, this striking Shibori-inspired look adds a graphic element to any interior. *Shown in Indigo.*

\$24 / TILE

—

5' × 7' — \$288

8' × 10' — \$720

10' × 12' — \$1,008

Create your own size at FLOR.com



Indigo

Easy to clean and easy to love. When life gets messy, simply pick up a tile to spot-clean or replace.

## Thick And Thin

21-1532

Line up your style with stripes in contrasting colors and weights. This durable yet stylish look is perfect for any space. *Shown in Cobalt.*

\$14 / TILE

—

5' × 7' — \$168

8' × 10' — \$420

10' × 12' — \$588

Create your own size at FLOR.com



Cobalt

Teal

Seafoam

Clementine



Wave



## Mined And Yours

21-1472

Glam looks and modern design are in sync and in style. This metallic is manufactured sustainably and made to shimmer. *Shown in Pigeon/Silver.*

\$32 / TILE

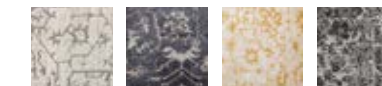
—

5' × 7' — \$384

8' × 10' — \$960

10' × 12' — \$1,344

Create your own size at FLOR.com



Pigeon/Silver

Shadow/Silver

Pearl/Gold

Grey/Silver



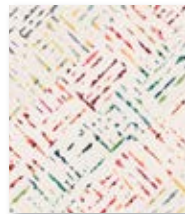
Flint/Silver



# Signature Looks Made Easy

FLOR.COM/SIGNATURE-RUGS

Signature Rugs take the guesswork out of shopping, giving you an unforgettable look without planning your rug from square one. We figured out the design and calculated how many carpet tiles you will need. All you do is choose the size, put it together, and enjoy.



**Hope Blossoms**  
63-2056  
\$290 - \$1,392  
Available in one color, four sizes.

# Your Rug, Your Way.

We believe a rug should be able to handle daily life and do it with style. The secret to our good looks is individual carpet tiles. If you want to update the style or change the size, no problem. Just replace a few tiles, not the whole rug.

**1. SAMPLES**  
See a style you like? Order our 6" samples for \$2 each. Visit [FLOR.com/samples](http://FLOR.com/samples) to get started.

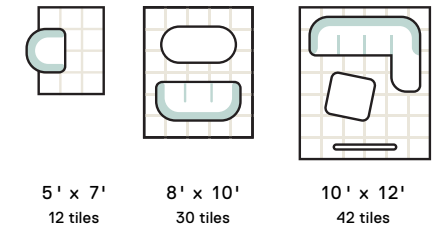
**2. ORDER**  
Once you place your order, most ship within 2 business days and arrive to your home in 5-7 business days.

**3. FLORDOTS**  
These adhesives stick to the bottom of each tile, not to your floor. With only two components, one person can assemble the rug.

**4. EASY CLEANING**  
The tiles come apart for easy cleaning—just loosen the FLORdot, rinse tile in your sink, and put it back in place.

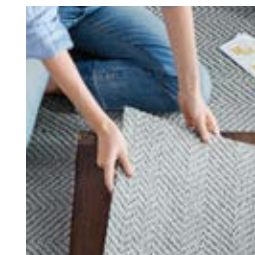
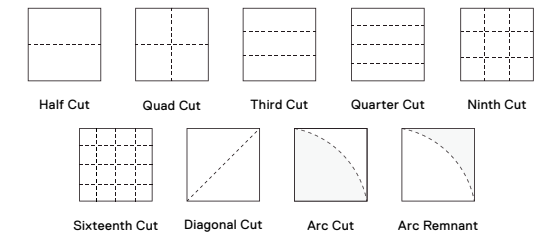
## STANDARD & CUSTOM SIZES

Select a standard rug size or enter your room dimensions into our tile calculator for a custom size. FLOR tiles are 19.7" or 50cm square. Visit us online at [FLOR.com/tile-calculator](http://FLOR.com/tile-calculator).

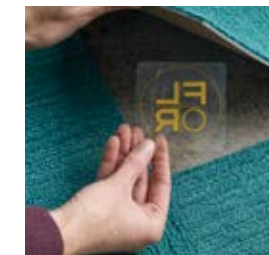


## CUTTING SERVICES

Cuts can help you get the best look for your space. Each cut is \$3.50 per tile. We also offer complimentary design services by phone or email.



EASY INSTALLATION



ADHESIVE FLORDOTS



RINSE STAINS EASILY

Payments made easy with [affirm](https://www.affirm.com/). To learn more go to [FLOR.com/affirm](http://FLOR.com/affirm).

**CONTACT US**  
For all questions and design inquiries, contact FLOR Customer Care. Monday-Friday, 10am to 6pm ET. Phone: 866.281.3567. Email: [support@FLOR.com](mailto:support@FLOR.com)

**GUARANTEE**  
FLOR warranty covers manufacturer's defects in product for one full year from purchase date. You may return for refund or replacement of the same item. Dye lots, colors, and styles are subject to change. We recommend purchasing a few extra tiles in case one becomes damaged beyond repair. To learn more visit [FLOR.com/warranty](http://FLOR.com/warranty).

**PRIVACY**  
Occasionally we make our mailing list available to other companies. If you'd prefer to opt out of these mailings, please contact Customer Care. View our full policy at [FLOR.com/privacy](http://FLOR.com/privacy).

**INSTALLATION**  
FLOR can be installed indoors over clean, hard, dry surfaces and smooth, fully cured, sealed concrete floors. FLOR cannot be installed outdoors; over carpet or padding; on surfaces with solvent-based sealers; on hand-painted surfaces or those with vintage varnishes; or on unfinished wax floors. FLORDots come with every order but you can always order more: 12 FLORDots cost \$5 and can be ordered online or over the phone. To learn more visit [FLOR.com/install](http://FLOR.com/install).

**RETURNS & REFUNDS**  
We want you to love your FLOR. If you are not satisfied with your purchase, we will accept returns of unused items in original condition with a valid proof of purchase within 30 days of customer receipt. Return shipping and any subsequent damages from return shipping are the responsibility of the purchaser. A refusal or cancellation of shipment is liable for return and original shipping costs, as well as a 15% restocking fee. Products sold as a set (e.g., Signature Rugs) must be returned as a complete set.

FLOR cannot accept merchandise purchased through a distributor/retailer/vendor or their returns. Please contact the distributor/retailer/vendor directly. FLOR outlet products are nonrefundable. Samples and gift cards cannot be returned for a refund. All FLOR custom-cut orders are final. Cutting fees are nonrefundable.

**PRICES & SALES TAX**  
Prices in the catalog and on [FLOR.com](http://FLOR.com) are in U.S. dollars and do not include sales tax or shipping. Availability, pricing, and delivery rates are subject to change. Taxes may apply. For Canadian shipments, all taxes, duties, and brokerage fees may apply. Commercial and contract orders may be subject to different pricing.

**CATALOG & EMAIL**  
Sign up to receive our catalog or emails at [FLOR.com](http://FLOR.com). If you no longer wish to receive our catalog, please unsubscribe by visiting [FLOR.com/unsubscribe](http://FLOR.com/unsubscribe) or by contacting Customer Care.

**SHIPPING & DELIVERY**  
Your order will arrive in oversized pizza boxes; most ship within two business days and arrive to your home in 5-7 business days. All FLOR tiles ship for \$2 each in the continental U.S. Additional costs apply for expedited shipping or shipping outside of the continental U.S. Orders to Alaska, Hawaii, and Puerto Rico are eligible for next-day and second-day air. For Canadian orders, customs charges, brokerage charges, duties, and taxes may apply. Shipping costs are nonrefundable. Orders of 175+ tiles may require up to 8 weeks to ship. For commercial and contract orders, please visit [FLOR.com/commercial](http://FLOR.com/commercial). FLOR does not ship to APO addresses. No CODs. Certain restrictions and exclusions apply.

**TERMS & CONDITIONS**  
All terms and conditions subject to change without notice.

# EASY BREEZY

Soft underfoot and easy to clean—that's what makes our sisal-inspired rugs oh so right for every space.



## Cut Corners

21-1470

Subtle diamonds. Subtle colors. Sometimes two subtles make a look that's oh so right. Bring it into a space for a modern, polished vibe that won't be overlooked. *Shown in Chalk.*



\$26 / TILE

—

5' x 7' — \$312

8' x 10' — \$780

10' x 12' — \$1,092

Create your own size at FLOR.com



\$20 / TILE

—

5' x 7' — \$240

8' x 10' — \$600

10' x 12' — \$840

Create your own size at FLOR.com

*New*

## Open Invitation

21-1543

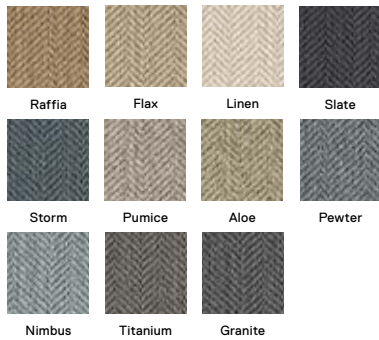
Come one, come all. This sisal-inspired style comes in neutral and fun colors to be enjoyed by anyone, anywhere.

*Shown in Bone. See more on pg. 22.*






**Signature Rug  
Suit Yourself  
Quarter Border**  
63-1738  
\$174 - \$617  
Available in 14 colors, three sizes.



\$16 / TILE  
—  
5' x 7' — \$192  
8' x 10' — \$480  
10' x 12' — \$672

### Suit Yourself 21-1318

The distinctive look of sisal with a subtle herringbone pattern offered in a nature-inspired neutral palette, well suited for any space. *Shown in Raffia with a quarter cut border of Made You Look in Coral, pg. 20.*

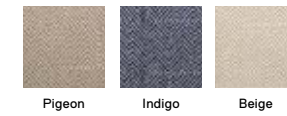
Create your own size at FLOR.com

### Pleats And Thanks 21-1517

This sisal-inspired rug features pleated breaks that create a seamless diamond pattern. *Shown in Pigeon.*

\$24 / TILE  
—  
5' x 7' — \$288  
8' x 10' — \$720  
10' x 12' — \$1,008

Create your own size at FLOR.com



Customize your rug to fit any space. Use our online calculator to determine the exact number of tiles needed to create your dream rug at FLOR.com/tile-calculator.



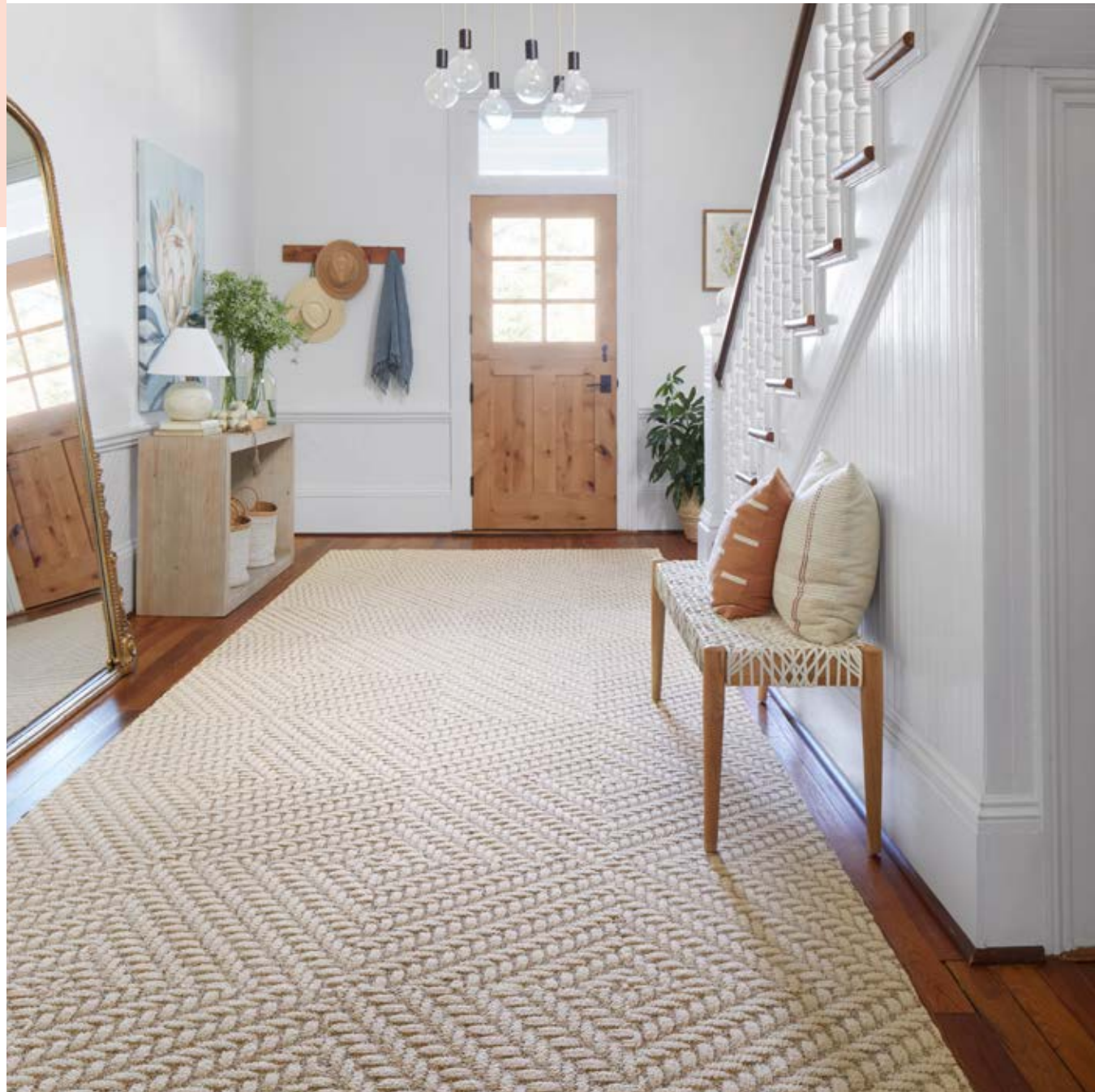
### Finer Things 21-1020

Reminiscent of a Berber, this hardworking design is great for rooms with heavy traffic. Each tile has subtle differences, giving the rug a seamless look. *Shown in Cream.*

\$16 / TILE  
—  
5' x 7' — \$192  
8' x 10' — \$480  
10' x 12' — \$672

Create your own size at FLOR.com





\$20 / TILE  
—

5' x 7' — \$240

8' x 10' — \$600

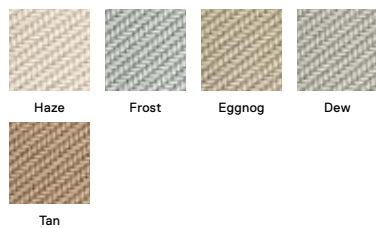
10' x 12' — \$840

Create your own size at FLOR.com

## Roadside Attraction

21-1351

Soft and inviting, but stands up to heavy traffic. To dial up the design, turn a tile to create a chevron or diamond. *Shown in Haze.*



\$20 / TILE  
—

5' x 7' — \$240

8' x 10' — \$600

10' x 12' — \$840

Create your own size at FLOR.com

## Coming Along

21-1345

The familiar look of woven seagrass but in earth-friendly fibers that make it softer and easier to maintain. *Shown in Pearl.*



# PURPLE DAZE

Add a soothing whisper of purple to any room with rugs featuring colorful palettes and vintage patterns.



*Get The Look*  
See how we created this rug at [FLOR.com/getthelook](https://www.flor.com/getthelook)

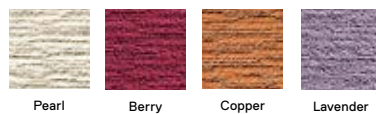
\$16 / TILE  
-  
5' x 7' - \$192  
8' x 10' - \$480  
10' x 12' - \$672

Create your own size at [FLOR.com](https://www.flor.com)

## Made You Look

21-1361

Bring every big, colorful dream to life. This box of crayons works well across collections and can be cut to create a unique design. *Shown in Pearl, Berry, Copper, and Lavender.*



+56  
More  
Colors on  
pg. 20

## Heart And Sole

21-1496

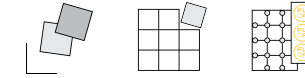
This well-worn look will sweep you off your feet with a pattern inspired by vintage heirloom rugs. *Shown in Coral.*



\$25 / TILE

-  
5' x 7' - \$300  
8' x 10' - \$750  
10' x 12' - \$1,050

Create your own size at [FLOR.com](https://www.flor.com)



FLOR Tile + FLORdot™ = Rug







★★★★★  
 I love when I am ready to replace it, I can recycle it, but I don't plan on doing that for many years.  
 - Jen

\$25 / TILE

5' x 7' - \$300  
 8' x 10' - \$750  
 10' x 12' - \$1,050

Create your own size at FLOR.com

### Turkish Smoke

21-1420

This pattern has the delicate tones of natural birch wood. Great on its own for a seamless, subtle look. It also pairs well with patterns for a high contrast vibe. *Shown in Pigeon.*



### Ou La La

21-1521

Add a touch of oushak chic to your space. This intricate pattern is a reimagining of traditional Turkish rugs. *Shown in Tidal.*

\$26 / TILE

5' x 7' - \$312  
 8' x 10' - \$780  
 10' x 12' - \$1,092

Create your own size at FLOR.com



### Reoriented

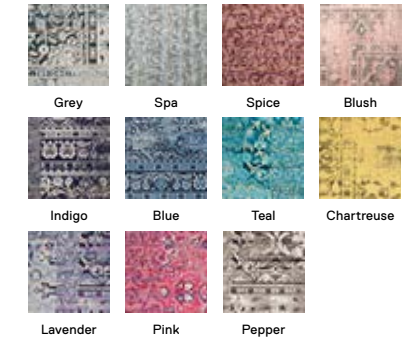
21-1320

A nod to the classic Oriental rug—using bold colors and surprising arrangements to make this pattern shine in any space. *Shown in Grey.*

\$22 / TILE

5' x 7' - \$264  
 8' x 10' - \$660  
 10' x 12' - \$924

Create your own size at FLOR.com





## Parallel Reality

21-1306

This customer favorite gives a space impact and motion with gently rolling stripes of color. *Shown in Purple.*

\$20 / TILE

5' x 7' - \$240

8' x 10' - \$600

10' x 12' - \$840

Create your own size at FLOR.com



## Like Minded

21-1379

Super cheery and equally cozy, it's a rug that pairs well with other, thicker styles and creates a charming area rug on its own. *Shown in Grey.*

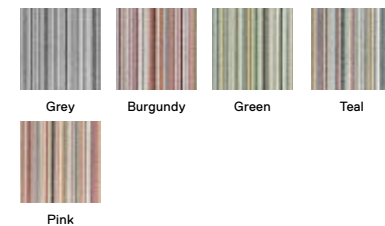
\$18 / TILE

5' x 7' - \$216

8' x 10' - \$540

10' x 12' - \$756

Create your own size at FLOR.com



Still deciding?  
**SAMPLE WITH  
 \$2 SWATCHES**



*Get The Look*  
 See how we created this rug at  
[FLOR.com/getthelook](https://FLOR.com/getthelook)

## Heaven Sent

21-1363

The beveled edges of this style give it an elevated sense of sophistication. But its soft, looped texture makes it the perfect foundation for any room. *Shown in Bone and Pigeon.*

Not eligible for cutting services.

\$18 / TILE

5' x 7' - \$216

8' x 10' - \$540

10' x 12' - \$756

Create your own size at FLOR.com





FLOR  
1280 West Peachtree St NW  
Atlanta, GA 30309  
866.281.3567



FLORSquares



FLOR



FLORSquares



FLORSquares

Inspiration awaits at #myFLOR

PRST STD  
US POSTAGE  
PAID  
FLOR

Source Code

Customer Number

Order online at **FLOR.COM** or call **866.281.3567**



**READY**  
Download  
the free  
Zappos app



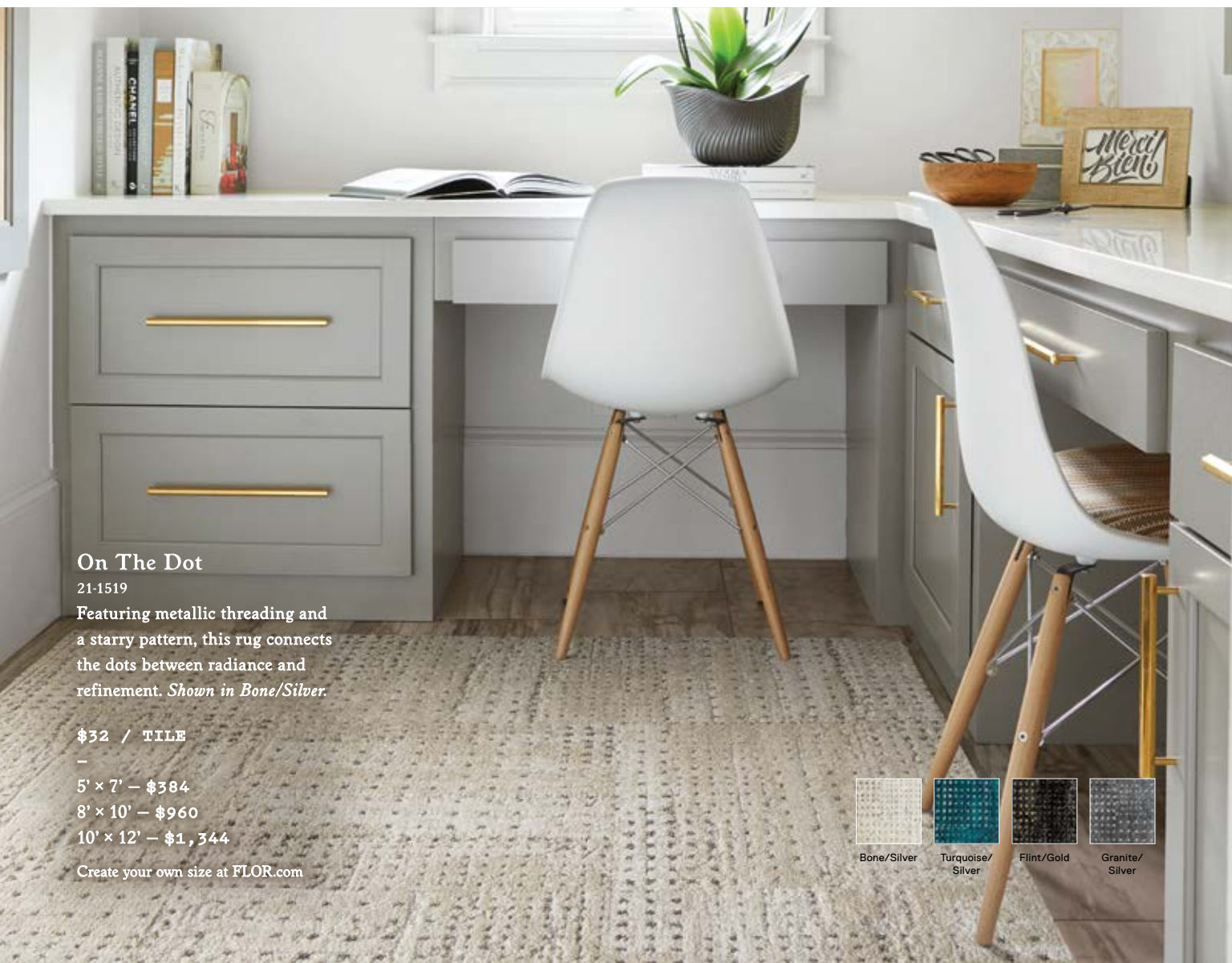
**AIM**  
Scan the Zappos  
QR code at online  
page



**ZAP**  
Watch  
it come  
to life!



**MIX**  
Paper from  
responsible sources  
FSC® C092758



## On The Dot

21-1519

Featuring metallic threading and a starry pattern, this rug connects the dots between radiance and refinement. *Shown in Bone/Silver.*

\$32 / TILE

5' x 7' - \$384

8' x 10' - \$960

10' x 12' - \$1,344

Create your own size at [FLOR.com](http://FLOR.com)



Bone/Silver



Turquoise/Silver



Flint/Gold



Granite/Silver